



iBuildSG LEAD Milestone Programme

Executive Development Programme

STRATEGIC LEADERSHIP FOR SUSTAINABILITY AND THE FUTURE OF CONSTRUCTION

3 to 7 November 2025 • The Netherlands: Amsterdam, Rotterdam and Delft



NETHERLANDS' PIONEERING EXCELLENCE IN SUSTAINABILITY & BUILT ENVIRONMENT INNOVATION

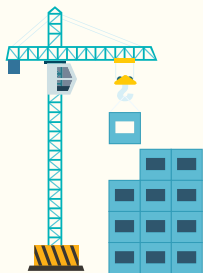
The Netherlands is globally recognised as a pioneer in advanced construction methods and innovation as well as a frontrunner in deep sustainability and adaptive reuse. The Dutch Built Environment sector sets standards that inspire cities worldwide, particularly in the following areas:

STRONG ENTERPRISE INNOVATION & ECOSYSTEM

- **Ranks 3rd in the 2025 European Innovation Scoreboard**, with a strong R&D ecosystem and collaboration across academia, startups, and industry
- **Thriving BE innovation ecosystem led by top Dutch universities** focusing on climate-resilient construction, material innovation, and digital tools
- **Home to global enterprises & BE Firms**



PIONEER IN INDUSTRIALISED CONSTRUCTION



- **Dutch policies target 15% of new homes from 2027** to use industrialised, prefabricated and modular construction
- **Dutch innovation policies advance digitalisation and automation** in construction to improve quality and cut emissions
- **Notable expertise in advanced building technologies and digital fabrication**, including 3D printing, parametric design, and robotic fabrication

LEADING SUSTAINABLE URBAN SYSTEM & CLIMATE STRATEGIES*

- **Strong national climate policy targeting net-zero emissions by 2050**, with interim goals of 55% reduction by 2030 and ~90% by 2040
- **National retrofit strategy aims to improve energy efficiency in 1.5 million homes by 2030**
- **National Adaptation Strategy and Plan strengthen long-term climate resilience** by integrating adaptation into water safety, infrastructure, and spatial planning



* **Both Amsterdam (1st) & Rotterdam (2nd) tops the 2024 Sustainability Cities Index** which measures the sustainability efforts of 100 cities around the world in multiple sectors, including Built Environment (Arcadis, 2024)



PROGRAMME OVERVIEW

The bespoke Executive Development Programme (EDP) on **Strategic Leadership for Sustainability and the Future of Construction** will enable senior executives of the Built Environment to gain first-hand exposure to successful climate adaptation strategies, energy transition initiatives, and advanced construction technologies, enabling them to translate Dutch expertise into actionable strategies to drive organisational excellence and competitive advantage in an evolving industry landscape. This programme also provides an invaluable opportunity for strategic knowledge exchange and synergies for collaboration amongst industry leaders.

KEY THEMES & LEARNING OBJECTIVES

The programme is specially curated to equip participants with strategic insights from Netherlands' leading firms in sustainability and construction innovation with the following key themes and learning objectives:



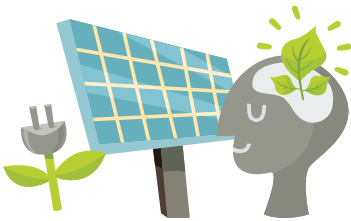
LEADING WITH VISION & EMPOWERING GROWTH

- Learn from Netherlands' **innovation ecosystem** and leadership approaches
- Develop **strategies for value-driven solutions** and enterprise growth
- Foster **organisational culture of innovation** and transformation



EMBRACING INNOVATION IN ADVANCED CONSTRUCTION & TECHNOLOGY

- Study **advanced manufacturing and assembly technologies** for adoption
- Learn best practices in **construction methods and processes**
- Enhance **productivity and operational efficiency**



STRENGTHENING CLIMATE RESILIENCE & ACCELERATING ENERGY TRANSITION

- Develop strategic insights into **Netherlands' net-zero transformation**
- Study **technological innovations and implementation expertise**
- Learn from **policy frameworks and best practices** in sustainability

These objectives will be delivered through an immersive learning experience featuring keynote presentations, curated site visits, and dialogues with Dutch industry leaders, sustainability experts, technology innovators, government officials, and academia.



LEADING WITH VISION & EMPOWERING GROWTH

EXPERTS & PIONEERING LEADERS



Mathew Vola
Fellow & Director,
ARUP



Willem Otter
BAM Nederland,
Executive Director
Specials,
Royal BAM Group
(Invited)



Ben van Berkel
Founder and
Principal Architect
UN Studio
(Invited)

ORGANISATION PROFILE



Office for Metropolitan Architecture (OMA)

OMA is a world-renowned architectural practice celebrated for its influential contributions to architecture, urbanism, and strategic design. Known for delivering bold and adaptive solutions to complex spatial challenges, OMA's leadership in innovation, interdisciplinary collaboration, and enterprise growth presents timely lessons for organisations seeking to remain agile, relevant, and future-ready in a fast-evolving built environment.



Royal Dutch Shell

Royal Dutch Shell

Shell is a global energy leader at the forefront of the transition to a low-carbon future. With a deep commitment to decarbonisation, energy systems innovation, and long-term sustainability, Shell exemplifies how large enterprises can drive transformation at scale.



Royal BAM Group

Royal BAM Group is one of Europe's leading construction and engineering firms, recognised for driving sustainable development through digital innovation, circular construction, and strategic collaboration. BAM's integrated approach to project delivery and environmental performance showcases how construction companies can lead industry transformation.

EMBRACING INNOVATION IN ADVANCED CONSTRUCTION & TECHNOLOGY

LEARNING JOURNEY TO EXEMPLARY PROJECTS



Photo credit: Home - De Zalmhaven

De Zalmhaven

De Zalmhaven features the tallest mixed-use tower constructed through advanced prefabricated methods, exemplifying how prefabrication enables efficient construction of tall structures without compromising on quality, sustainability, or architectural flexibility. *(Pending Confirmation)*



Photo credit: Elements - Arup

The Elements

The Elements in Amsterdam showcases a cutting-edge hybrid timber-steel-concrete structural system, combining the strengths of each material to deliver innovative, efficient, and sustainable construction.

ORGANISATION PROFILE



Consolis VBI

Consolis VBI is a leading provider of precast and modular concrete solutions, widely recognised for its expertise in delivering adaptable systems for complex architectural and infrastructural needs. With a strong focus on customisation, VBI's innovative approach to smart, scalable building solutions offers valuable insights for organisations seeking to build more intelligently and sustainably.



Cepezed

Cepezed is an award-winning architectural firm renowned for its pioneering use of the Kit-of-Parts methodology streamlining design and construction through prefabricated, flexible components. By seamlessly integrating architecture, engineering, and construction, Cepezed demonstrates how design precision and modular thinking can accelerate project delivery while supporting long-term sustainability.

STRENGTHENING CLIMATE RESILIENCE & ACCELERATING ENERGY TRANSITION

LEARNING JOURNEY TO EXEMPLARY PROJECTS



Photo credit: HAUT - Arup

HAUT Amsterdam

Haut Amsterdam demonstrates how timber-frame technology can lead the way in creating sustainable, high-density buildings that meet the demands of modern cities while promoting environmental responsibility.



Photo credit: ArchDaily

Timmerhuis

Timmerhuis is an innovative mixed-use urban complex distinguished by its modular architectural approach, designed for adaptability and flexibility. The project demonstrates how modular construction techniques can create dynamic urban spaces that efficiently respond to evolving functional and community needs.

ORGANISATION PROFILE

ARUP

Arup Netherlands

Arup Netherlands is a leading multidisciplinary engineering and design firm renowned for its commitment to sustainability and innovation in structural engineering. With a strong focus on integrating cutting-edge technologies and sustainable practices, Arup develops solutions that push the boundaries of what's possible in resilient and eco-friendly built environments.

G&S&

G&S&

G&S& is a leading Netherlands-based dynamic Developer recognised for driving innovation and excellence across design, engineering, and project delivery. With a strong emphasis on collaboration and sustainability, G&S& helps organisations navigate complex challenges and transform urban spaces, offering valuable insights for those looking to lead growth and innovation in a rapidly evolving industry.

PROGRAMME OUTLINE

DATE	TIME	SESSIONS / FOCUS AREAS
SAT 1 NOV		Outbound flight (Singapore to Amsterdam) (Flight SQ324)
SUN 2 NOV		Arrival in Amsterdam
MON 3 NOV	AMSTERDAM	
	AM	Welcome & Programme Overview
		Keynote Presentation: Building a Climate-Neutral Future - Amsterdam's Circular Economy in Urban Development
		Engineering Urban Resilience: Integrating Circular Design Principles in the Built Environment
		Learning Journey #1 on Exemplary Sustainability Projects: The Elements, Ruby Emma Hotel and HAUT
	PM	Fireside Chat: Driving Sustainable Action with Corporate Value
		Travel to Rotterdam
TUE 4 NOV	DELFT & ROTTERDAM	
	AM	Designing the Future of Industrialised Construction: Navigating Challenges and Seizing Opportunities
		Adaptive Reuse and Retrofits for Resilience: Crafting Innovative Architectural Solutions
	PM	Remountable Construction through Kit-of-Parts Approach
		Learning Journey #2 on Prefabricated Construction of Tallest Mixed-use Tower
WED 5 NOV	ROTTERDAM	
	AM	Architecting the Future: Lessons from OMA's Approach in Adaptive Architecture
		Learning Journey #3 on Innovative Landmark Project
	PM	Automating Engineering Processes & Adaptation of Robotics in Construction Projects
		Travel to Amsterdam
THUR 6 NOV	AMSTERDAM	
	AM	From Code to Concrete: Pioneering 3D Printing in Architecture & Infrastructure
		Powering Progress: Strategic Leadership for a Sustainable Energy Future
	PM	Modular Systems for Urban Construction
		Appreciation and Networking Dinner
FRI 7 NOV	AMSTERDAM	
	AM	Dynamic Design Strategies for Sustainable, Scalable Impact
		Learning Journey #5 on Holistic Sustainable Design: Human-Centred Architecture for Climate Resilience
	PM	Closing Plenary on The City as Catalyst: Leading the Transition to a Circular and Climate-Resilient Built Environment
		Roundtable Discussions and Reflections – What's Next?
		Presentation of Certifications & Group Photo
SAT 8 NOV		Inbound flight (Amsterdam to Singapore) (Flight SQ323)
SUN 9 NOV		Arrival in Singapore

**Please note that the programme may be subject to changes, delegates will be informed accordingly should there be any changes.*

PROGRAMME ORGANISER

BCA Academy

The BCA Academy (BCAA) is the education arm of the Building and Construction Authority, Singapore. Founded in 1984, BCAA offers a wide range of training and education programmes tailored to the needs of the building and construction industry. These include programmes for professionals, management and executive personnel, and technical specialists. BCAA has been collaborating with established tertiary institutions to conduct undergraduate degree, postgraduate degree, executive development and advanced management programmes. Our partners include Imperial College London, Stanford University, Carnegie Mellon University, Singapore Management University, Singapore University of Social Science, University College London, University of Nottingham, HFT Stuttgart University of Applied Sciences, Tsinghua University, Tongji University, Kyoto University, University of Florida, Denmark Technological University and University of Newcastle, Australia.



ADMINISTRATIVE DETAILS

Executive Development Programme on **Strategic Leadership for Sustainability and the Future of Construction (Netherlands)**

COURSE DURATION: 3 to 7 November 2025 (Registration close: 24 October 2025)

PROGRAMME FEE: SGD 4,500* (GST not applicable)

**Fee includes course materials, refreshments, appreciation dinner and local ground transportation to and from the airport and throughout the programme. Fee does not include airfare, accommodation and other meal expenses.*

FLIGHTS AND ACCOMMODATION

- Participants are encouraged to book their air tickets based on the recommended flights (SQ324 on 1 Nov 2025 and SQ323 on 8 Nov 2025).
- Local ground transportation to and from the airport will be provided for participants taking the recommended flights.
- Participants are encouraged to book accommodation at the recommended hotels[^], as local ground transportation will be provided to and from these hotels throughout the programme.

Recommended Hotels [^]	Check-In	Check-Out	Remarks
Ruby Emma Hotel Amsterdam	2 Nov	3 Nov morning	Travel to Rotterdam on 3 Nov evening
Haven Hotel Rotterdam, Curio Collection by Hilton	3 Nov	5 Nov morning	Travel to Amsterdam on 5 Nov evening
Hotel Jakarta Amsterdam	5 Nov	8 Nov morning	Depart to Amsterdam Airport Schiphol on 8 Nov morning

PAYMENT

Payment instruction will be provided after the registration is submitted.

REPLACEMENT, WITHDRAWAL AND REFUND POLICY

(all requests must be submitted in writing to BCA Academy by the following dates)

- Replacement request by **13 Oct 2025**.
- Withdrawal request by **13 Oct 2025**: 90% refund of programme fee.
- Withdrawal request after **13 Oct 2025**: No refund of programme fee.
- Registration received after **13 Oct 2025**: No replacement or refund of programme fee.

CPD POINTS

Subject to award from BOA-SIA, PEB and SGBC-GMAP.

ENQUIRIES

You may contact Ms Ong Hui Wen (ong_hui_wen@bca.gov.sg) should you have any queries.



REGISTRATION

To register, please log into our Online StoreFront (OSF) at <https://eservices.bcaa.edu.sg/registration/#/Login> or scan QRcode and search for course code **81047**.

