

BCA ACADEMY

COURSE PORTFOLIO 2025



BUILDING NEW HORIZONS

BCA Academy (BCAA) is the education and training arm of the Building and Construction Authority (BCA), Singapore, and is recognised by the Ministry of Education (MOE) as a Government-affiliated post secondary education institution.

Established in 1984, BCAA has been providing quality training and education pathways for a diverse group of audience, from young learners to seasoned industry practitioners seeking to upskill. A wide range of rigorous and practice-oriented built environment programmes are offered, enhanced through various immersive on-campus learning galleries and experiential learning training facilities. Over the years, BCAA has consistently produced quality graduates who excel in their careers. BCAA also partners with leading universities to deliver leadership programmes designed to enhance the managerial and technical competencies of industry leaders, equipping them with the skills needed to future-proof the built environment sector.



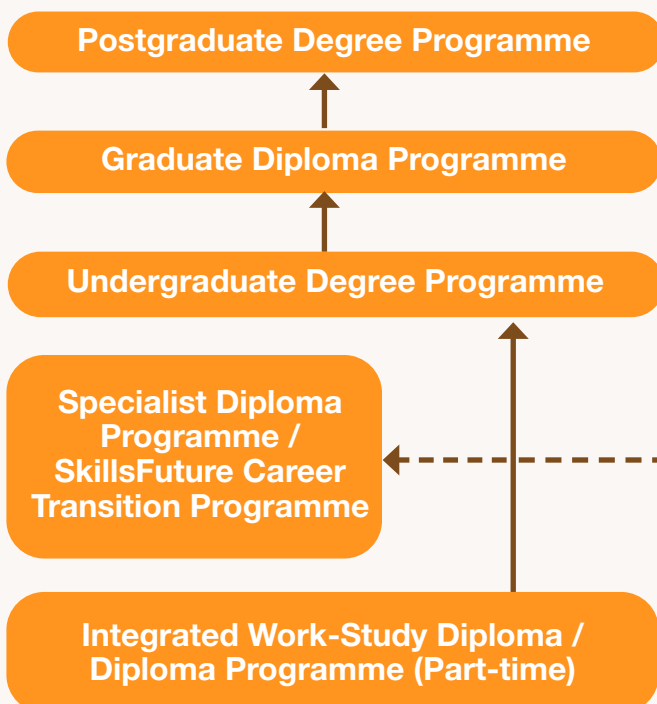
DEDICATED TO GROOMING INDUSTRY PRACTITIONERS & LEADERS

BCA Academy is fast grooming a steady pool of highly-skilled professionals in niche areas of specialisation. We offers certified courses in key areas under the Built Environment Industry Transformation Map (ITM) focusing on a value-chain approach through the three key stages of a building's life cycle - from planning and design, construction, to operations and maintenance. These programmes and courses have been developed to equip professionals with specific skills as part of their continued professional development and are recognized and/or certified by the relevant authorities and institutions as approved training for specific purposes.

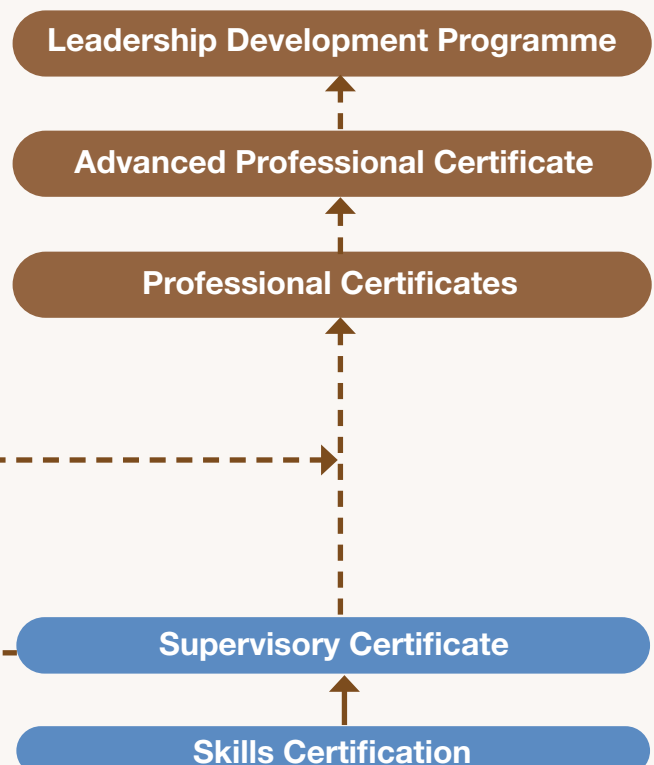


ADVANCING WITH US

ACADEMIC PATHWAY



CONTINUING EDUCATION TRAINING PATHWAY



PARTNERSHIP

The world has become more integrated and interlinked. This calls for more collective collaboration amongst the industry stakeholders to achieve common goals.

It is imperative that industry trade associations, educational institutions, professional bodies, and also public agencies come together to establish strategic partnership to deliver a consolidated vision to strengthen the entire ecosystem and community.

Our Partners



board of architects singapore

professional engineers board
singapore



CONTINUING EDUCATION AND TRAINING (CET) CENTRE

Working with SkillsFuture Singapore (SSG), BCA Academy has taken the role as the dedicated Continuing Education and Training (CET) Centre for the Built Environment sector to strengthen collective capability and capacity in enterprise development and drive workforce transformation.

In collaboration with industry, the CET Centre would support firms to address and prioritise deepening in-demand skills, supporting mid-careerists to pivot towards BE sector, developing industry capabilities in emerging areas as well as specialist training to allow more Singaporeans to gain technical competencies in niche areas supporting Building Control functions such as plant operations. As the CET Centre, more funding support would be available for BE firms to defray training costs in support of capability development in transformative skills.

SSG's course funding regime for eligible participants will comprise of two tiers (subject to terms and conditions):

- **Tier 1** – baseline subsidy of up to 70% of course fees; up to 90% of course fees with enhanced subsidy & up to 95% of course fees for SkillsFuture Career Transition Programme (SCTP)
- **Tier 2** – baseline subsidy of up to 50% of course fees; up to 70% of course fees with enhanced subsidy

SCHOOL OF PROFESSIONAL AND SPECIALIST EDUCATION (PSE)

Building transformative competencies for a future ready workforce

To accelerate workforce transformation, PSE focuses on curating industry-relevant curriculum, offering a wide array of CET and Executive Development Programmes in key transformation areas, to better prepare our workforce with emerging and in-demand skills. PSE has developed a comprehensive suites of training programmes to advance capabilities in transformative areas at both professional and enterprise development, as well as facilitate collective capabilities across the built environment value chain. To enhance the recognition of continued professional development, PSE works closely with the industry to continually align our training efforts with the relevant industry accreditation schemes and the Skills Framework for the Built Environment.

Upskilling workforce in support of higher safety, quality and living standards

PSE also curates extensive specialist programmes to continually deepen the competencies of accredited and licensed professionals in specialised areas (such as geotech instrumentation, earthwork supervision), raising competency standards of Qualified Personnel (QPs) and Managing Agents (MAs) to ensure they are kept up-to-date with the latest regulatory and property management requirements, as well as develop niche capabilities of licensed specialists and skilled technicians in specialised areas (such as crane operation, façade inspection, lifts and escalators). PSE also educates professionals with the latest code requirements and industry best practices in the areas of construction workmanship and universal design to support higher quality construction and an inclusive built environment.

Facilitating the proliferation and exchange of BE knowledge to accelerate capability development

PSE actively partners the industry, government agencies and TACs to organise joint seminars and workshops on domain topics as well as co-lead learning journeys and immersion programme to showcase exemplary projects and domain capabilities. This serves to keep industry practitioners at the forefront of technologies and best practices while at the same time provides platforms for the exchange of experiences, ideas and technical expertise.



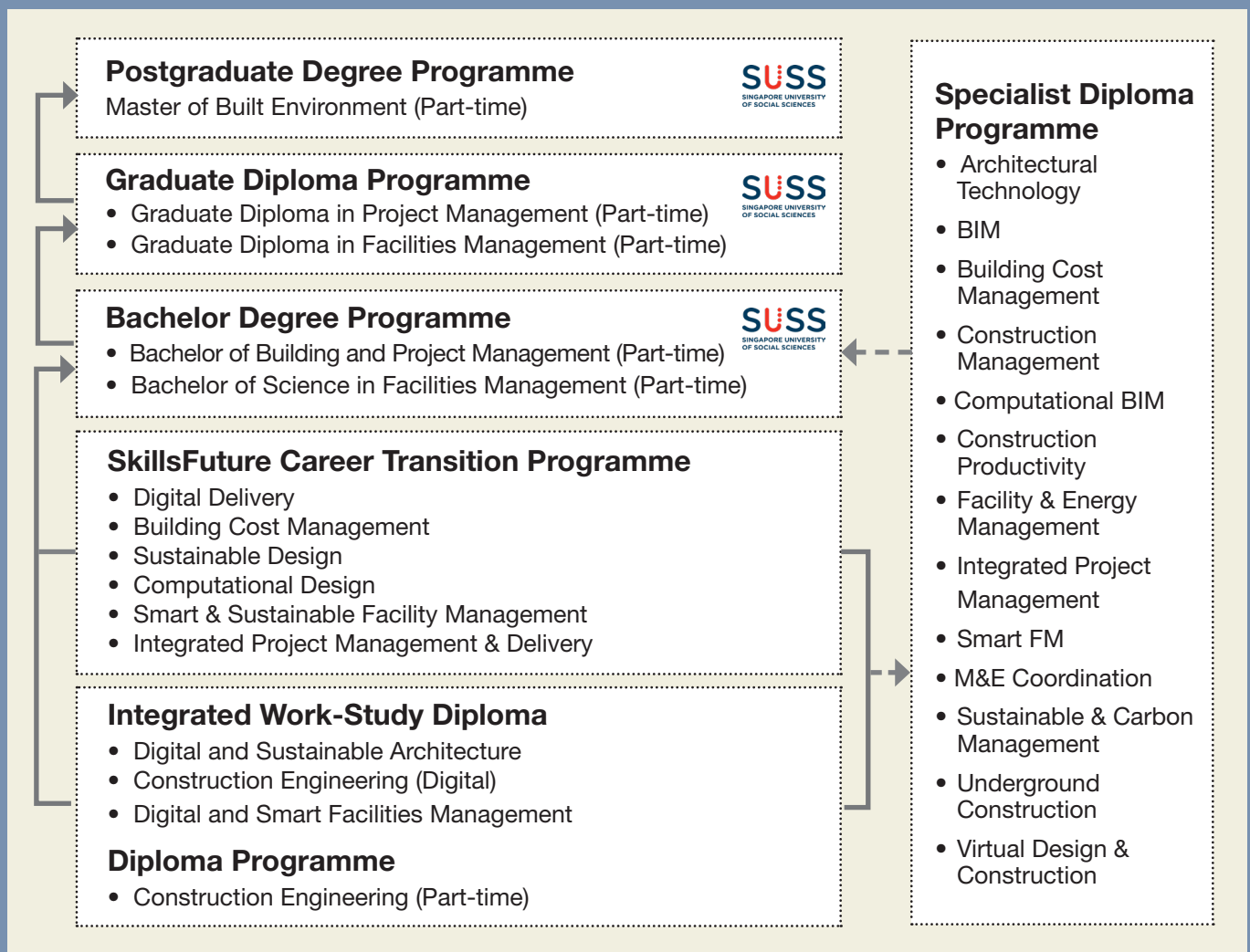
SCHOOL OF ACADEMIC & CONTINUING EDUCATION (ACE)

Empowering students and industry professionals to excel in the built-environment industry

The School of Academic & Continuing Education (ACE) has been the forefront in providing high-quality academic programmes for school leavers, as well as continuous training for adult learners and industry professionals. Our dedication to academic excellence is demonstrated through our industry-relevant courses and curricula, which are developed and regularly reviewed in collaboration with experienced in-house lecturers and industry practitioners. Through a diverse range of course delivery methods and modes, we nurture individuals who emerged as valuable assets in the ever-evolving BE sector. Specifically, our Integrated Work-Study Diploma programmes offer students real-life working experience while pursuing their diplomas, providing a unique opportunity to learn valuable practical skills outside the traditional classrooms setting.

Addressing the demands of an evolving BE sector through comprehensive programme offerings

At ACE, we are committed to offer programmes to meet the evolving needs of the BE sector. From integrated digital delivery to sustainability, construction productivity, smart facilities management and underground construction, our course offerings are designed to equip students with the essential skills and knowledge for success in the BE sector. Furthermore, our partnership with esteemed local and international institutions enables us to provide a comprehensive array of programmes including undergraduate and postgraduate degree programmes, offering academic pathways to fulfil the aspirations of our students.



BuildSG LEAD FRAMEWORK



Talent and Leadership Development Platforms

LEAD Horizon Programme for Emerging Leaders

- Nurture leaders of the future
- Strengthen leadership capabilities and innovative thinking



LEAD Milestone Programme for Enterprise-Level Leaders

- Build capacity for innovative leadership
- Explore regional growth and collaboration

LEAD Events & Initiatives

- Promote collective learning and talent development
- Build a shared vision for the built environment sector



Scan the QR code or visit <https://www1.bca.gov.sg/buildsg/leadership-initiatives/ibuildsg-lead> for more information on BuildSG LEAD Framework

BUILT ENVIRONMENT ITM

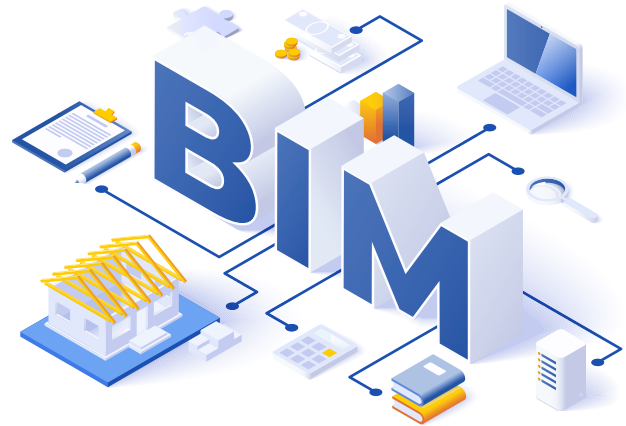
Building a world-class and resilient sector

Comprising global champions and value chain alliances, offering innovative, sustainable, & in demand solutions, and quality jobs, supported by a competent Singapore core.

DESIGN

A. Integrated Planning and Design

- Drive collaboration across value chain to enable better planning from the onset, and optimise building design for downstream construction and maintenance.
- Create a conducive environment for collaboration and regulatory submissions through common data standards, with a data-rich Building Information Modelling model that is used across the project lifecycle.



CONSTRUCTION

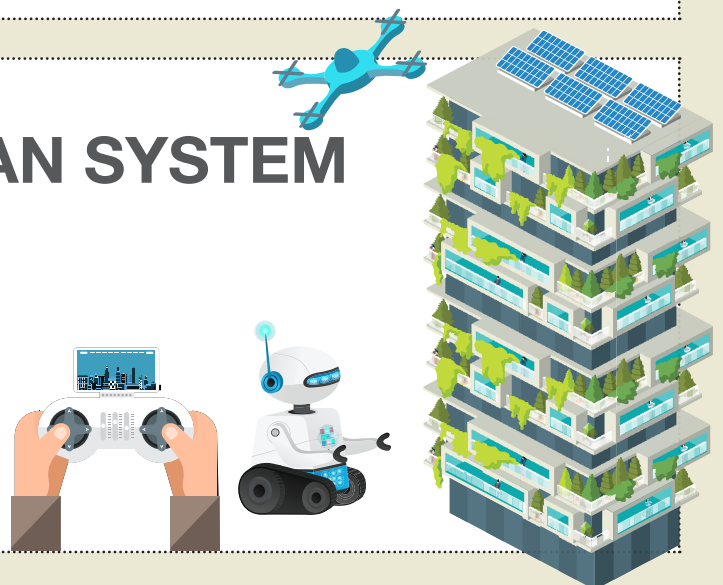
B. Advanced Manufacturing and Assembly

- Automate fabrication in factories to improve productivity, quality and work environment.
- Drive co-location of synergistic construction activities (e.g. aggressive storage, batching plants, precast plants) to optimise land use and streamline logistical processes.

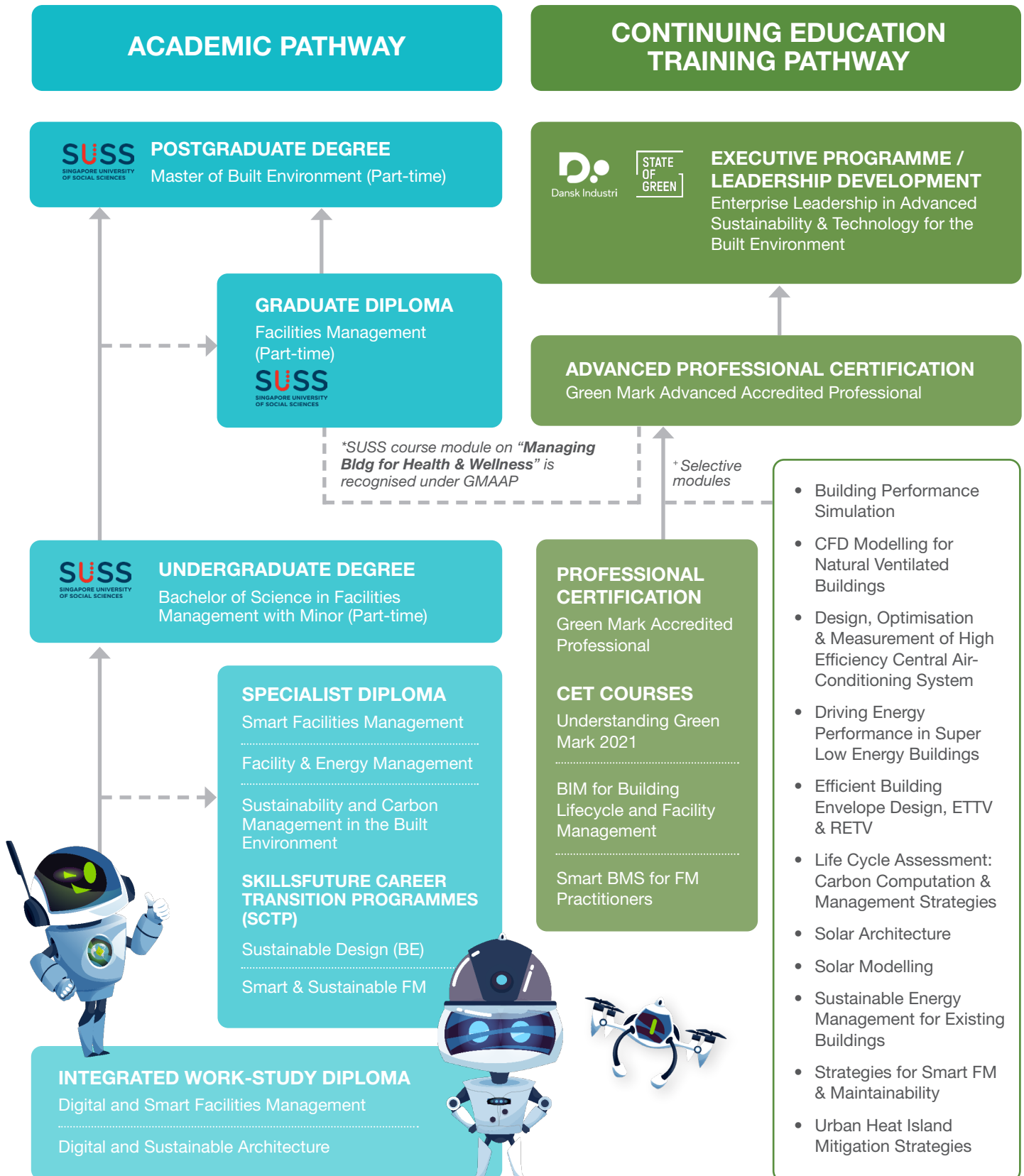
SUSTAINABLE URBAN SYSTEM

C. Sustainable Urban System

- Accelerate our decarbonisation efforts to support our net zero aspirations, and create a more sustainable and livable built environment.
- Streamline operations and improve maintenance of building enabled by Integrated, Aggregated and Smart Facilities Management.



BUILDING CAPABILITY DEVELOPMENT IN SUSTAINABLE URBAN SYSTEMS





PMET

Professional, Managerial,
Executive & Technical

PMET (Professional, Managerial, Executive, Technical) professionals play a crucial role in the success of any organisation, providing valuable contributions to strategic planning and operational excellence. In the dynamic landscape of today's global economy, it is imperative for PMET professionals to continuously upskill and reskill. By proactively acquiring new knowledge and upgraded skillsets, PMET professionals can position themselves as future-ready, resilient, and equipped to meet evolving business demands. This commitment to ongoing professional development not only enhances PMET professionals' individual productivity but also strengthens the overall competitiveness of organisations in the Built Environment sector.



Code	Course Title	Duration	Fee (Incl of GST)	Funding* (T&C apply)	Level					
					1	2	3	4	5	6
LEADERSHIP & MANAGEMENT										
81034	Executive Development Programme in Leading Collaboration and Innovation in the Built Environment	5 days	\$5,600 (GST not applicable)	--					★	★
81035	Executive Development Programme on Enterprise Leadership in Advanced Sustainability & Technology for the Built Environment	5 days	\$4,200 (GST not applicable)	--					★	★
80043	SMU-BCA Executive Development Programme	8 days	\$12,529.91	EDB				★	★	
80044	SUTD-BCA Design Thinking Workshop	4 days	\$5,093.46	EDB				★	★	
80047	SMU-BCA Advanced Management Programme	6 days	\$13,752.34	EDB					★	★
INTEGRATED PLANNING AND DESIGN										
(A) INTEGRATED DIGITAL DELIVERY										
80023	BIM for Building Lifecycle and Facility Management	2 days	\$754	✓			★	★		
77A75	BIM Modelling (Architecture Track)	4 days	\$2,387	✓		★	★			
77M75	BIM Modelling (MEP Track)	4 days	\$2,387	✓		★	★			
77S75	BIM Modelling (Structure Track)	4 days	\$2,387	✓		★	★			
77076	Certification Course in BIM Management	4 days	\$1,554	✓			★	★		
78087	Computational BIM	2 days	\$777	✓			★	★		
80099	Introduction to the Regulatory Approval Process via CORENET X	1 day	\$147	--			★	★		
80065	Principles of Integrated Digital Delivery	e-Learning	\$499	✓			★	★		
(B) INTEGRATED PROJECT DELIVERY										
80095	Construction Law & Contracts: Principles & Application	12 evenings	\$2,276	--				★	★	
81031	Certification Course on Collaborative Contracting	4 days	\$2,019	--				★	★	
73003	Construction Contract Administration	2 days	\$1,032	--			★	★		
80027	Construction Contract Drafting & Dispute Resolution	2 days	\$777	--			★	★		
81030	Introduction to Collaborative Contracting	1 day	\$505	--			★	★		
79082	The Security of Payment Act – Technicalities and Practicalities	1 day	\$466	--			★	★		
80083	Understanding and Applying the Public Sector Standard Conditions of Contract (PSSCOC)	2 days	\$666	--			★	★		
ADVANCED MANUFACTURING & ASSEMBLY										
78029	Basic Concept in Construction Productivity Enhancement	0.5 day	\$94	--	★	★				
81023	Code of Practice on Buildability	0.5 day	\$216	--		★	★			
77053	Site Management of Precast Concrete Construction	1.5 days	\$610	✓		★	★			
80078	Supervision of Prefabricated Prefinished Volumetric Construction (PPVC) Projects	2 days	\$910	✓		★	★			
SUSTAINABLE URBAN SYSTEMS										
(A) GREEN BUILDINGS										
71929	Certification Course for Efficient Building Envelope Design, ETTV & RETV	2 days	\$766	✓				★	★	
81043	Certification Course on Green Mark for Data Centres	3 days	\$1,730	✓			★	★		
71925	Certification Course for Green Mark Accredited Professional (GM AP)	5 days	\$1,354	--			★	★		
80053	Certification Course on Building Performance Simulation	3 days	\$1,443	✓				★	★	
80039	Certification Course on CFD Modelling for Natural Ventilated Buildings	3 days	\$1,887	✓				★	★	
80045	Certification Course on Design, Optimisation and Measurement of High Efficiency Central Air-Conditioning System	4 days	\$1,332	✓				★	★	
80085	Certification Course on Driving Energy Performance in Super Low Energy (SLE) Buildings	2 days	\$1,022	✓				★	★	
81027	Certification Course on Life Cycle Assessment: Carbon Computation and Management Strategies	2.5 days	\$1,504	✓				★	★	
80046	Certification Course on Solar Architecture	2 days	\$721	✓				★	★	
73086	Certification Course on Solar Modelling	3 days	\$1,387	✓				★	★	
80086	Certification Course on Sustainable Energy Management for Existing Buildings	3 days	\$1,678	✓				★	★	
80084	Certification Course on Urban Heat Island Mitigation Strategies	2 days	\$999	✓				★	★	
80082	Understanding Green Mark 2021	0.5 day	\$99	--		★	★			

Code	Course Title	Duration	Fee (Incl of GST)	Funding* (T&C apply)	Level					
					1	2	3	4	5	6
SUSTAINABLE URBAN SYSTEMS										
(B) FACILITIES MANAGEMENT										
80054	Certification Course for Strategies on Smart FM and Maintainability	2 days	\$877	✓				★	★	
81042	Design for Maintainability for Public Housing (HDB) Projects	1 day	\$470	--			★	★		
80072	Introduction to Smart Building Management System for FM Practitioners	2 days	\$1,554	✓			★	★		
81029	Principles and Applications of Integrated Facilities Management	2 days	\$1,065	✓				★	★	
REGULATIONS										
77079	Building Control Regulations for Site Supervisors	0.5 day	\$166	--			★	★		
73971	Essential Knowledge in Construction Regulations for Licensed Builders	2.5 days	\$821	--			★	★		
80058	Legislation Course for Managing Agents	3 days	\$510	✓		★	★			
71015	Renovation For Public Housing	2 days	\$410	--	★	★				
81026	Submission Requirements & Code Compliance to Obtain Temporary Occupation Permit (TOP) and Certificate of Statutory Completion (CSC)	1.5 days	\$535	--			★	★		
CIVIL & STRUCTURAL ENGINEERING										
80096	Certification Course for Piling Personnel (for Piling Supervisors)	2 days	\$999	--			★	★		
80E96	Certification Course for Piling Personnel (for Piling Engineers & above)	2 days	\$999	--			★	★		
80097	Certification Course in Instrumentation and Monitoring for Construction Work	2 days	\$993	--			★	★		
81045	Certification Course on Engineering Geology for Piling Works	3 days	\$900	--			★	★		
MECHANICAL & ELECTRICAL ENGINEERING										
78081	Lift and Escalator Course for Engineers	5 days	\$3,830	✓				★	★	
80032	Lift and Escalator Course for Inspectors	4 days	\$2,831	✓			★	★		
78026	Protection against Lightning for Buildings	2 days	\$810	--		★	★			
77A51	Refresher Course For Licensed Electrical Workers (Electrician)	1 day	\$233	--			★	★		
77051	Refresher Course For Licensed Electrical Workers (Technician/Engineer)	1 day	\$299	--			★	★		
45033	Refresher Course for Licensed Plumbers – Updates on Regulations and Testing of Sanitary System	0.5 day	\$50.93	--			★	★		
79081	Registered Earthworks Supervisor Course	2 days / 4 evenings	\$555	--		★	★			
ACCESSIBILITY & UNIVERSAL DESIGN										
78014	Certification Course for Universal Design Assessors	4 days	\$1,716	--				★	★	
80098	Refresher Course for Universal Design (UD) Assessors	2 days	\$757	--				★	★	
QUALITY										
81020	Good Industry Practices - Aluminium Window	1 day	\$455	--		★	★			
81025	Good Industry Practices - Drywall Installation including Wet areas application	1 day	\$455	✓		★	★			
81017	Good Industry Practices - Marble/ Granite/ Ceramic Tiling	1 day	\$455	--		★	★			
81018	Good Industry Practices - Painting	1 day	\$455	--		★	★			
81024	Good Industry Practices - Timber Doors, Wardrobe & Kitchen Cabinet	1 day	\$455	--		★	★			
81021	Good Industry Practices - Timber Flooring	1 day	\$455	✓		★	★			
81022	Good Industry Practices - Waterproofing for External Wall	1 day	\$455	--		★	★			
81019	Good Industry Practices - Waterproofing for Internal Wet Areas	1 day	\$455	--		★	★			
SAFETY										
77018	Behavioural Safety for the Construction Industry	2 days	\$544	--			★	★		
79092	Certificate in Facade Inspection	3.5 days	\$1,665	✓			★	★		
77087	Certification Course for Site Investigation Supervisors	4 evenings	\$832	--			★	★		
46020	Demolition Course for Renovation Contractors	1 day	\$233	--		★	★			
45010	Managing Noise in Construction Sites	1 day	\$455	✓		★	★			
81041	Regulatory Requirements and Effective Supervision of Demolition Works	1.5 days	\$580	--			★	★		

CP

Construction Personnel

The development of Singapore, including its world-class infrastructure, airports, seaports, high-rise buildings etc, would not have attracted global attention if not for the contribution of the construction personnel (or tradesmen as they are more commonly known). Recognising the need to gear up for greater productivity and efficiency, the construction personnel must also be retrained to be multi-skilled, to deliver the project objectives.



Code	Course Title	Duration	Fee (Incl of GST)	Funding* (T&C apply)	Level					
					1	2	3	4	5	6
PLANT										
44070	Approved Crane Erector For Approved Crane Contractors (Tower Crane)	3 days or 6 evenings	\$799	✓		★	★			
44050/ 44053	3.5-Day / 5-Day Bridging Courses (Mobile Crane - Truck Mounted)	3.5 days or 5 days	\$1,187/ \$1,554	✓	★	★				
44048/ 44051	3.5-Day / 5-Day Bridging Courses (Crawler Crane)	3.5 days or 5 days	\$1,187/ \$1,554	✓	★	★				
44054	5-Day Bridging Courses (Tower Crane)	5 days	\$1,554	✓	★	★				
44014/ 44015/ 44016	Refresher Course (Mobile Crane / Crawler Crane / Tower Crane)	3.5 days	\$865.89	✓	★	★				
45046_ Theory	Crawler Crane Operation (Theory)	3 days	\$636	✓	★	★				
45046_ practical	Crawler Crane Operation (Practical)	12 days	\$4,189	✓	★	★				
45047_ Theory	Mobile Crane (Truck Mounted) Operation (Theory)	3 days	\$636	✓	★	★				
45047_ practical	Mobile Crane (Truck Mounted) Operation (Practical)	12 days	\$3,634	✓	★	★				
45048_ Theory	Tower Crane (Saddle Jib) Operation (Theory)	3 days	\$636	✓	★	★				
45048_ practical	Tower Crane (Saddle Jib) Operation (Practical)	12 days	\$4,593	✓	★	★				
44083	Developing a Lifting Plan for Crane Lifting Operations	2 days	\$588	✓			★	★		
45045	Operation of Tower Crane (Luffing Jib) Theory	0.5 day	\$350	--	★	★				
44085	PPVC Lifting Course for Crane Operators (Truck-mounted Mobile Crane)	1 day	\$794.58	--		★	★			
44086	PPVC Lifting Course for Crane Operators (Saddle Jib Tower Crane)	1 day	\$794.58	--		★	★			
44084	PPVC Lifting Course for Crawler Crane Operators (Crawler Crane)	1 day	\$794.58	--		★	★			
SKILLS										
77036	Builder Certificate in Plumbing & Pipefitting	9 months (evening)	\$4,496	✓		★	★			
78009	Certificate in Gas Technology	20 evenings or 10 days	\$2,498	✓		★	★			
74008	Certificate in Pavement Construction and Maintenance	6 months (evening)	\$3,552	✓		★	★			
48005	Continuing Education Training (CET) Course for Renewal of CoreTrade Supervisors' Registration for Architectural	1 day or 2 evenings	\$416	--		★	★			
48006	Continuing Education Training (CET) Courses for Renewal of CoreTrade Supervisors' Registration for M&E	1 day or 2 evenings	\$416	--		★	★			
48004	Continuing Education Training (CET) Courses for Renewal of CoreTrade Supervisors' Registration for Structural	1 day or 2 evenings	\$416	--		★	★			
48002	CoreTrade Supervisor Course (Architectural)	35 hours (4.5 days or 12 evenings)	\$1,187	✓		★	★			
48003	CoreTrade Supervisor Course (Mechanical & Electrical)	35 hours (4.5 days or 12 evenings)	\$1,187	✓		★	★			
48001	CoreTrade Supervisor Course (Structural)	35 hours (4.5 days or 12 evenings)	\$1,187	✓		★	★			
71009	Gas Service Workers Course	18 evenings	\$2,109	✓		★	★			
41005	Installation of Structural Supports for Air-con Condensing Units	2 days or 4 evenings	\$682.52	✓		★	★			

The rapid development and evolving business environment in the construction sector provides a strong impetus for continuing education and training, to elevate individual and organisational excellence. Building on specialised skills in niche disciplines will lead to better opportunities for career advancement and deepen knowledge to facilitate overall performance at the individual and organisational level.



ACADEMIC PROGRAMMES

SPECIALIST DIPLOMA PROGRAMMES										
Code	Course Title	Duration	Fee (Incl of GST)	Funding* (T&C apply)	Level					
					1	2	3	4	5	6
Specialist Diploma in Architectural Technology		3 months per modular certificate								
79004A	Certificate in Architectural BIM Submission	Jan - Mar	\$2,220	✓			★	★		
79004B	Certificate in Sustainable Architectural Design	May - Jul	\$2,220	✓			★	★		
79004C	Certificate in Architectural Detailing & Building Services	Sep - Nov	\$2,220	✓			★	★		
Specialist Diploma in Building Information Modelling		3 months per modular certificate								
74056A	Certificate in BIM Design and Coordination	Jan - Mar / Jul - Sep	\$3,608	✓			★	★		
74056B	Certificate in BIM Construction and Coordination	Apr - Jun / Oct - Dec	\$3,608	✓			★	★		
Specialist Diploma in Building Cost Management		3 months per modular certificate								
74051A	Certificate in Building Cost Management (Project Management)	Jan - Mar	\$2,220	✓			★	★		
74051B	Certificate in Building Cost Management (Cost Control Management)	May - Jul	\$2,220	✓			★	★		
74051C	Certificate in Contract Administration	Sep - Nov	\$2,220	✓			★	★		
Specialist Diploma in Computational BIM (Building)		3 months per modular certificate								
79020A	Certificate in Computational Thinking and Programming	Jan - Apr	\$3,885	✓			★	★		
79020B	Certificate in Computational BIM Applications (Building)	Jul - Oct	\$3,885	✓			★	★		
Specialist Diploma in Construction Management		3 months per modular certificate								
74037A	Certificate in Construction Management (MEP System)	Jan - Mar	\$2,404	✓			★	★		
74037B	Certificate in Construction Management (Architecture and Structure)	May - Jul	\$2,405	✓			★	★		
74037C	Certificate in Contract and Cost Management	Sep - Nov	\$2,405	✓			★	★		
Specialist Diploma in Construction Productivity		3 months per modular certificate								
79005A	Advanced Certificate in Construction Productivity	Jan - Mar / Jul - Sep	\$2,553	✓			★	★		
79005B	Certificate in Management of Productive Technologies	Apr - Jun / Oct - Dec	\$4,108	✓			★	★		
Specialist Diploma in Facility & Energy Management		3 months per modular certificate								
74A19	Certificate in Digital Delivery of Facilities Management	Jan - Mar	\$2,404	✓			★	★		
74B19	Certificate in Mechanical System and Building Management	May - Jul	\$2,405	✓			★	★		
74C19	Certificate in Electrical System & Energy Management	Sep - Nov	\$2,405	✓			★	★		
Specialist Diploma in Integrated Project Management										
SIPM211	Scope of Work for Project Management in BE Sector	1.5 days	\$788	✓			★	★		
SIPM212	Project Management Body of Knowledge in BE Sector	12 evenings	\$1,732	✓			★	★		
SIPM213	Project Management for Productivity Enhancement	5 evenings	\$999	✓			★	★		
SIPM214	Integrated Procurement Management	6 evenings	\$1,176	✓			★	★		
SIPM215	Contract Administration and Collaborative Contracting	10 evenings	\$1,854	✓			★	★		
SIPM216	Project Assignment	1 month	\$111	--			★	★		
Specialist Diploma in M&E Coordination		3 months per modular certificate								
74033A	Certificate in Mechanical & Plumbing Systems	Jan - Mar	\$2,293	✓			★	★		
74033B	Certificate in Electrical & Telecommunication Systems	May - Jul	\$2,294	✓			★	★		
74033C	Certificate in MEP Planning & Site Management	Sep - Nov	\$2,294	✓			★	★		
Specialist Diploma in Smart Facilities Management		3 months per modular certificate								
74A19	Certificate in Digital Delivery of Facilities Management	Jan - Mar	\$2,404	✓			★	★		
79024B	Certificate in Planning and Management of Smart FM	May - Jul	\$2,683	✓			★	★		
79024C	Certificate in Integrated Facilities Management	Sep - Nov	\$2,683	✓			★	★		
Specialist Diploma in Sustainability and Carbon Management in the Built Environment		3 months per modular certificate								
79036A	Certificate in Sustainable Building Design Strategies [NEW]	Feb - Apr	\$3,600	✓			★	★		
79036B	Certificate in Carbon Management for the Built Environment [NEW]	May - Jul	\$3,600	✓			★	★		

SPECIALIST DIPLOMA PROGRAMMES											
Code	Course Title	Duration	Fee (Incl of GST)	Funding* (T&C apply)	Level						
					1	2	3	4	5	6	
Specialist Diploma in Underground Construction		3 months per modular certificate									
79014A	Certificate in Basic Geotechnical Engineering	Jan - Mar	\$2,220	✓			★	★			
79014B	Certificate in Underground Excavation	May - Jul	\$2,220	✓			★	★			
79014C	Certificate in Tunnelling Technique	Sep - Nov	\$2,220	✓			★	★			
Specialist Diploma in Virtual Design & Construction		3 months per modular certificate									
79012A	Certificate in Virtual Design & Construction Practices	Jan - Apr	\$3,330	✓			★	★			
79012B	Certificate in Virtual Design & Construction Process Management	Jul - Oct	\$3,330	✓			★	★			
POSTGRADUATE / UNDERGRADUATE DEGREE PROGRAMMES											
--	PART TIME Bachelor of Building and Project Management (Awarded by Singapore University of Social Sciences, offered in partnership with BCA Academy)	3-4 years (Jan / Jul)	Refer to www.suss.edu.sg						★		
--	PART TIME Bachelor of Science in Facilities Management (Awarded by Singapore University of Social Sciences, offered in partnership with BCA Academy)	3-4 years (Jan / Jul)	Refer to www.suss.edu.sg						★		
--	PART TIME Graduate Diploma in Project Management (Awarded by Singapore University of Social Sciences, offered in partnership with BCA Academy)	6 months (Jan / Jul)	\$14,388-\$15,956 Refer to www.suss.edu.sg						★		
--	PART TIME Graduate Diploma in Facilities Management (Awarded by Singapore University of Social Sciences, offered in partnership with BCA Academy)	6 months (Jan / Jul)	\$14,388-\$15,956 Refer to www.suss.edu.sg						★		
INTEGRATED WORK-STUDY DIPLOMA PROGRAMMES (FULL-TIME)											
79002	Diploma Foundation Programme	1 year	\$381.50 (S'porean)/ \$3,869.50 (S'pore PR)/ \$14,170 (Intl) (Per Year)			★					
79029	Diploma in Construction Engineering (Digital)	3 years	\$3,270 (S'porean)/ \$7,630 (S'pore PR)/ \$14,170(Intl) (Per Year)				★				
79030	Diploma in Digital and Smart Facilities Management						★				
79028	Diploma in Digital and Sustainable Architecture						★				
DIPLOMA PROGRAMMES (PART-TIME)											
Diploma in Construction Engineering											
77026A	Certificate in Structural Analysis	Apr - Aug	\$3,330	✓			★				
77026B	Certificate in Construction Technology	Oct - Feb	\$3,330	✓			★				
77026C	Certificate in Site Management	Oct - Feb	\$3,330	✓			★				
77026D	Certificate in Reinforced Concrete Design	Apr - Aug	\$3,330	✓			★				
77026E	Certificate in Structural Design	Apr - Aug	\$3,330	✓			★				
Career Conversion Programmes											
SKILLSFUTURE CAREER TRANSITION PROGRAMMES (SCTP)											
79031	SCTP in Digital Delivery (Built Environment) [NEW]	8.5 months	\$20,165	✓		★	★				
79032	SCTP in Sustainable Design (Built Environment) [NEW]	10.5 months	\$21,418.50	✓		★	★				
79033	SCTP in Computational Design (Built Environment) [NEW]	7 months	\$10,845.50	✓			★	★			
79034	SCTP in Smart and Sustainable Facility Management [NEW]	12 months	\$11,281.50	✓			★	★			
79035	SCTP in Integrated Project Management and Delivery (Built Environment) [NEW]	7.5 months	\$11,172.50	✓			★	★			
79037	SCTP in Building Cost Management [NEW]	11 months	\$14,442.50	✓			★	★			

For funding supported amount, please check the respective course pages at www.bcaa.edu.sg



B C A A C A D E M Y

www.bcaa.edu.sg

200 Braddell Road Singapore 579700