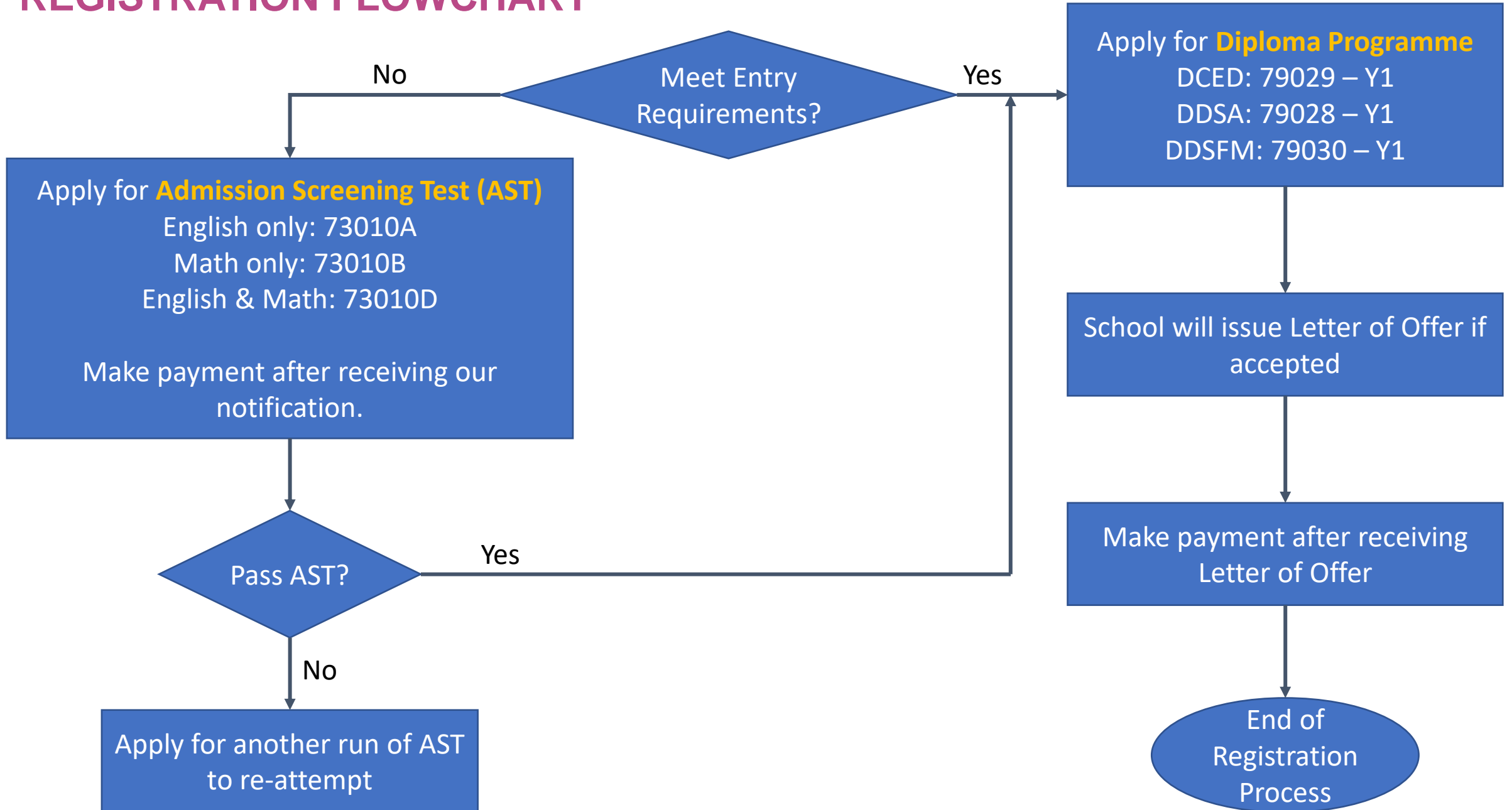


# PROGRAMME DETAILS

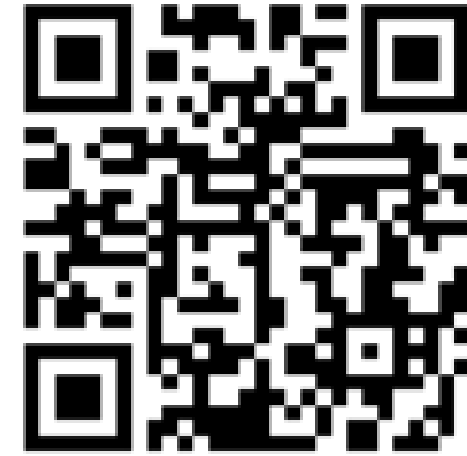
DIPLOMA	MINIMUM ENTRY REQUIREMENTS	FEES (per year excluding GST)		
Programmes	GCE 'O' level graduates	Singapore Citizen	Permanant Resident	International Student
Diploma in <ul style="list-style-type: none"> <li>• Digital and Sustainable Architecture (DDSA)</li> <li>• Construction Engineering (Digital)(DCEED)</li> <li>• Digital and Smart Facilities Management (DDSFM)</li> </ul>	<ul style="list-style-type: none"> <li>• 4 GCE 'O' levels</li> <li>• English Language (EL1) - Grade 1 to 7</li> <li>• Mathematics - Grade 1 to 6</li> <li>• Two relevant subject - Grade 1 to 6</li> </ul>	S\$3,000	S\$7,000	S\$13,000
	ITE graduates from relevant courses			
	<ul style="list-style-type: none"> <li>• Nitec with GPA <math>\geq 3</math></li> <li>• Higher Nitec <math>\geq 1.5</math></li> </ul>			
	Existing working professionals looking for upgrade or switch careers.			
	Those with at least 3 years working experience and WPLN level 6 and above.			

# REGISTRATION FLOWCHART



# BCA ACADEMY ONLINE STOREFRONT (OSF)

<https://eservices.bcaa.edu.sg/registration/#/Login>



BCA Academy

Welcome to  
BCA Academy's Online Storefront

#### Assistance on Online StoreFront (OSF)

- For assistance on OSF transactions such as account suspension/expiry, change of contact person etc, please submit your request via online feedback form [here](#)

Please beware of malware stealing login credentials saved in internet browsers. Stay vigilant against malicious emails that can infect devices with malware. Keep software and security patches up-to-date. Never disclose your passwords and 2FA details to others.

Please do not click on any links if you receive SMSes that appear to be from BCA. Please be assured that BCA will never ask or request for anyone's personal details via SMS notifications and/or automated phone messages. For any queries/feedback, please visit [bca.gov.sg/feedbackform/](http://bca.gov.sg/feedbackform/).



FAQ (PDF) 629.28KB



User Manual (PDF) 629.28KB

You can refer to this FAQ for  
A. Registering for an account  
B. Enrolling for a course  
C. Returning to your saved drafts  
D. Submitting your applications  
E. Payment to secure your seat

#### Please Sign In

Individual  Company

Username

Password

Remember Me

[Register for an account](#)

[Reset/Forget Password](#)

[Forgot your username](#)

Sign In

Register for an account or Sign in to get started

Language English