



BCA - Industry Workplan 2022



Collective Efforts Facilitated Recovery from COVID-19 Challenges

Impact of COVID-19 on the Sector



Project Delays
e.g. Manpower shortage



↑ **Manpower & Compliance Costs**



Cashflow of firms affected
with weaker firms exiting the sector

Measures to Support Recovery

Government Support



- **\$1.36B Construction Support Package**, incl Jobs Support Scheme, Foreign Worker Levy waivers and rebates
- **Extended COTMA** provides temporary relief to selected types of contracts severely affected by the impact of COVID-19



- **Facilitated Private-led AfA** to bring in Foreign Workers to alleviate manpower crunch
- **Boosted more than 90% of our eligible workers**, providing additional protection against COVID-19 → Gradual relaxation of COVID-19 SMM



- **New PSSCOC / Consultancy Agreement** to effect equitable risk sharing for pandemic outbreaks and fluctuations in prices for key materials
- **Guide on Building Design and Operations** to reduce spread of virus aerosols

Key Focus Areas for 2022

Continue helping the industry to recover from COVID-19 and



Transforming the Built Environment



Transforming Regulations to Shape a Safe & Resilient Sector



Meeting Homeowners' Liveability Aspirations

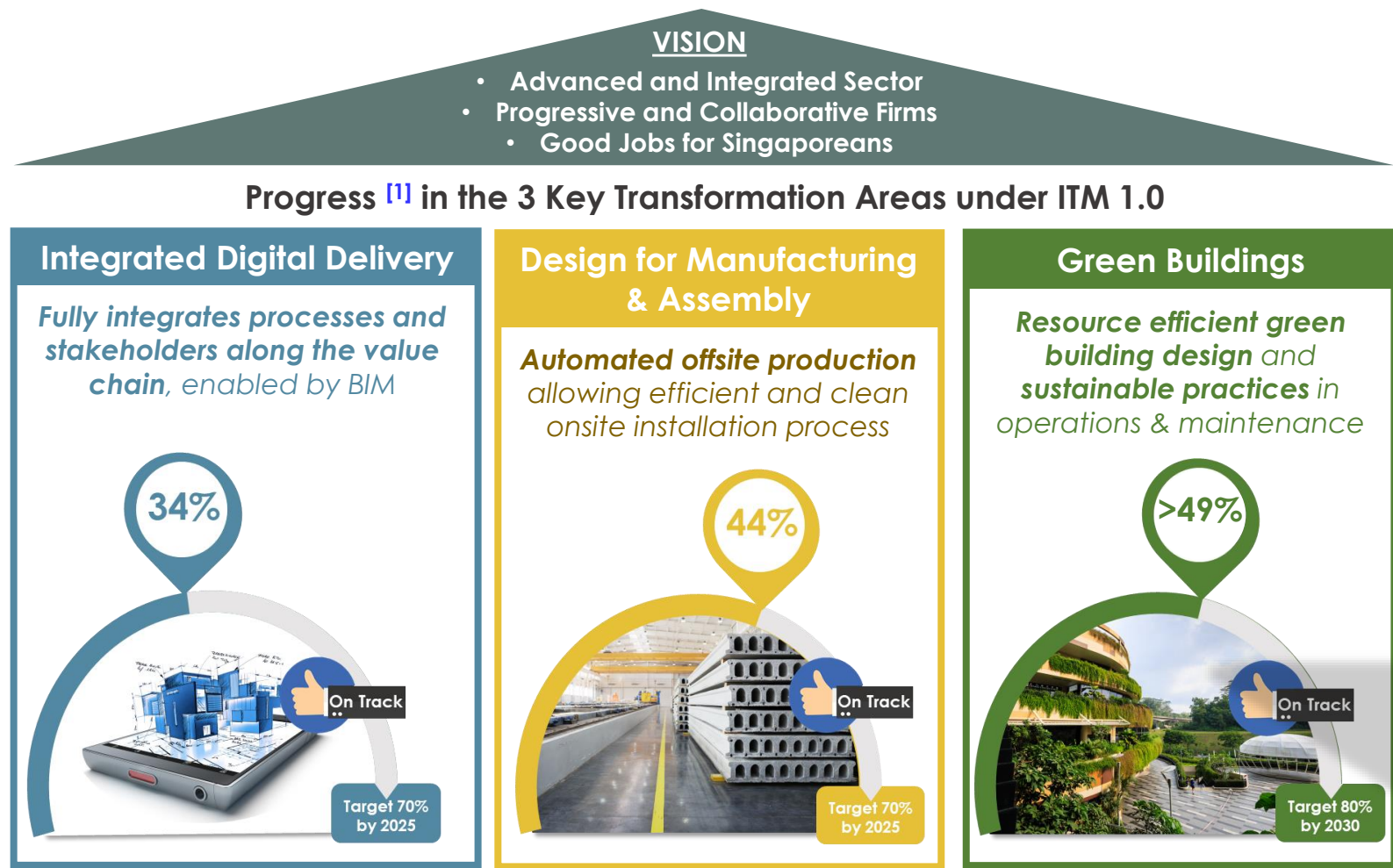
Why are these our corporate priorities for FY22?

Emerge stronger from COVID-19 and address standing issues exacerbated by COVID-19

Ensure regulations remains effective and efficient in upkeeping safety standards & resiliency of the BE

Activate market to shape demand for better Built Environment outcomes

Progress in Industry Transformation despite COVID-19 Operations



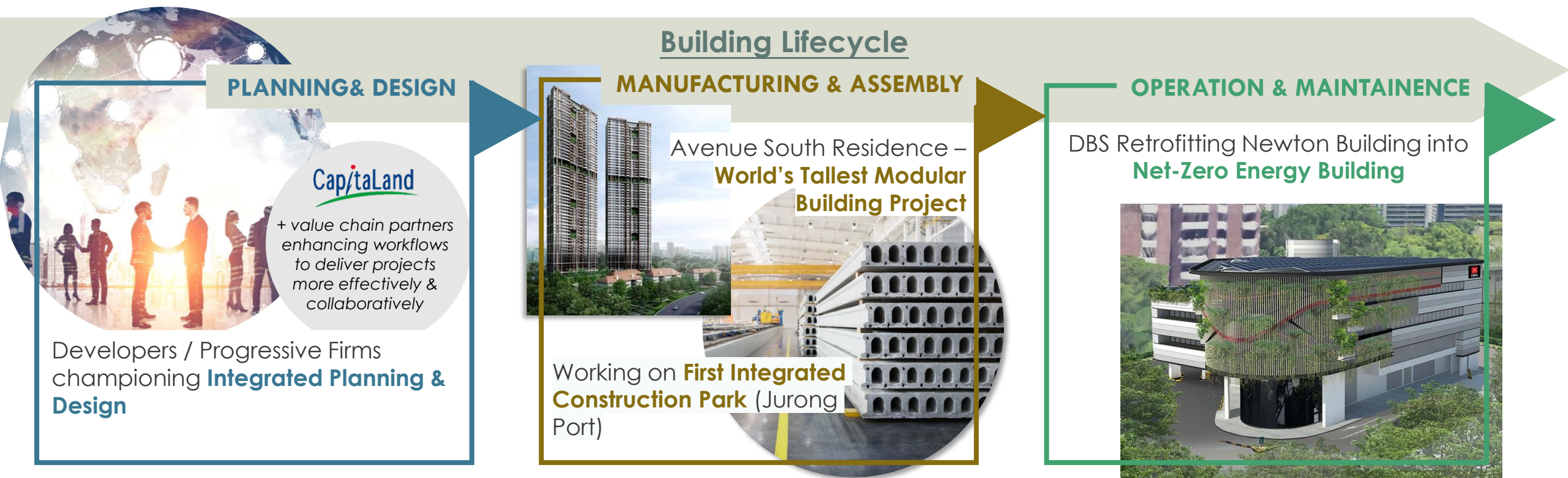
[1] Progress as of Dec 2021

○○○ New Initiatives Launched

- a. **Comprehensive Planning to Chart the Way Forward** (e.g. Singapore Green Building Masterplan)
- b. **Demonstration of Transformation Led by Progressive Firms and Key Projects** (e.g. Growth and Transformation Scheme, Built Environment Transformation GFA Incentive Scheme, Smart FM Proof-of-Concept Grant)
- c. **Supporting Adoption of Broad-base Solutions** (e.g. Advanced Digital Solutions (ADS) scheme (together with IMDA) to encourage adoption of R&A solutions)

...we've also started engaging our industry partners to review the ITM

Innovation and Building Resilience to Transform and Grow

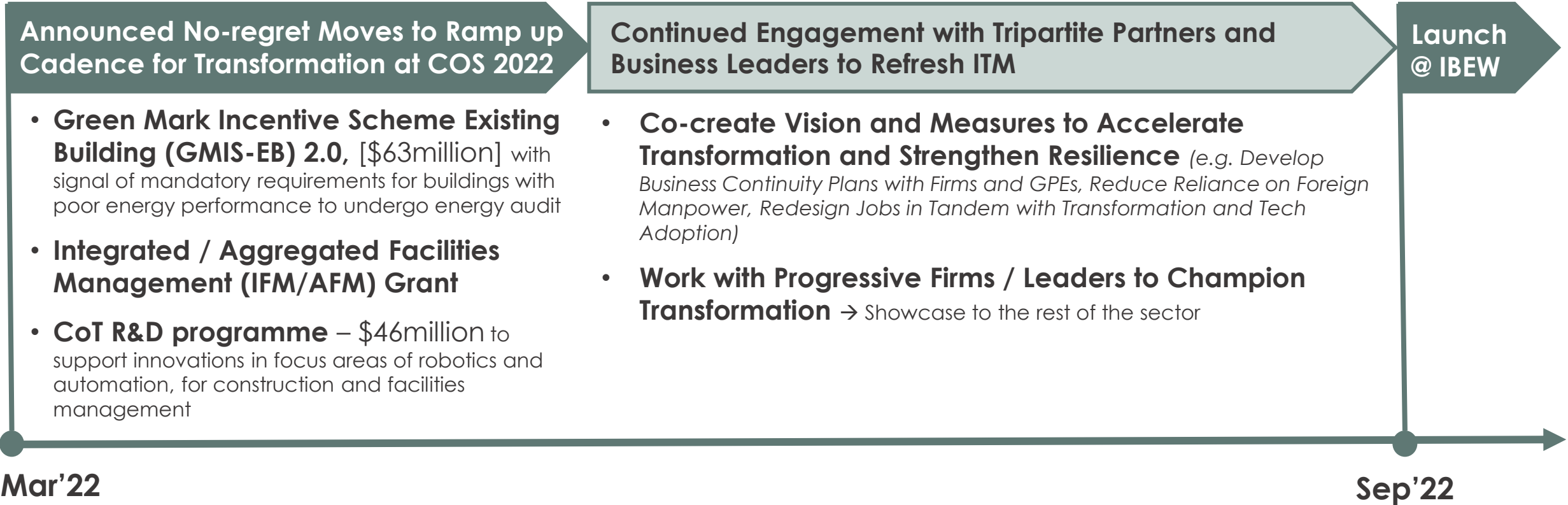


RESILIENCE



1. Transforming the Built Environment – Industry Transformation Map

Continued Engagement to Refresh / Co-create ITM 2025 Prior to Launch [1]



[1] Target Launch at International Built Environment Week 2022

2. Transforming Regulations to Shape a Safe & Resilient Sector

Embarked on Projects to Transform the Regulatory Framework



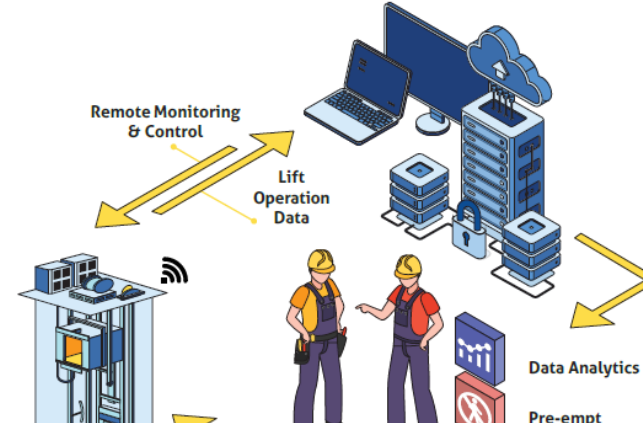
Transform Regulatory System

e.g. CORENET X - pilot trials for Collaboration Platform and Automated Model Checker completed



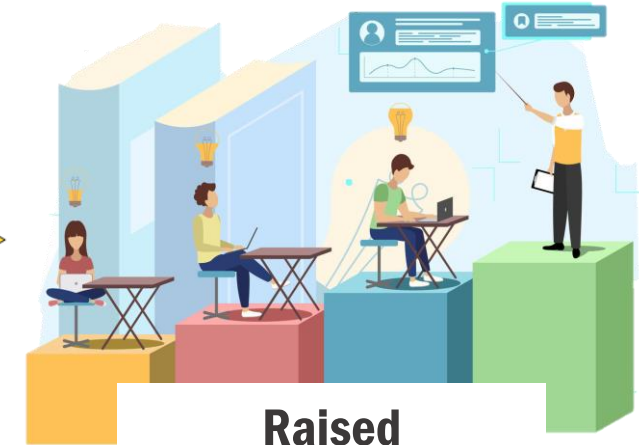
Safety Guidelines

e.g. Guidelines on PFI and PSI to provide clarity on inspection requirements



Technology-Facilitated Inspection

e.g. Lift and escalator Remote Monitoring & Diagnostics (RM&D); Drones for Façade Inspection



Raised Professionalism

e.g. Industry-led Managing Agents Accreditation

2. Transforming Regulations to Shape a Safe & Resilient Sector

Maintain Cadence for Regulatory Transformation – Leverage Technology to Improve Regulatory Efficiency



Streamline Application Processes across WoG through CORENET X

Encourage upfront collaboration across disciplines to **reduce conflicts in design and regulatory iterations**



Integrated Smart Approvals and Inspections

Provide a **coordinated and efficient inspection** process for the industry

3. Meeting Homeowners' Liveability Aspirations

Leveraging Consumers' Liveability Aspirations to Shape Demand for Better Built Environment Outcomes



**Differentiation through Accreditation
and Benchmarking**



**Create Stronger Awareness on How Consumers
are Contributing to Sustainability and Stronger
Recognition of Leaders**

Conclusion

BCA will:

- Monitor the ground situation and **pace our transformation** accordingly
- **Partner with industry** to co-create and transform the sector



End of Presentation

