

BCA ACADEMY

# FORCE AHEAD. TOGETHER.

COURSE PORTFOLIO 2022





# FORGE AHEAD TOGETHER

One can achieve very little if operating alone. Instead, working together can bring us plentiful opportunities to achieve greatness, together.

Driven by this belief, BCA Academy works very closely with industry professional bodies and associations, public agencies, institutes of higher learning from both local and overseas, to create an efficient and effective platform for collaborative learning, to forge into the future collectively.



FORGE AHEAD. TOGETHER.

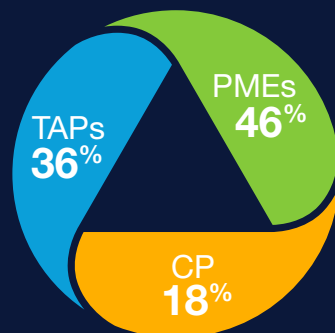
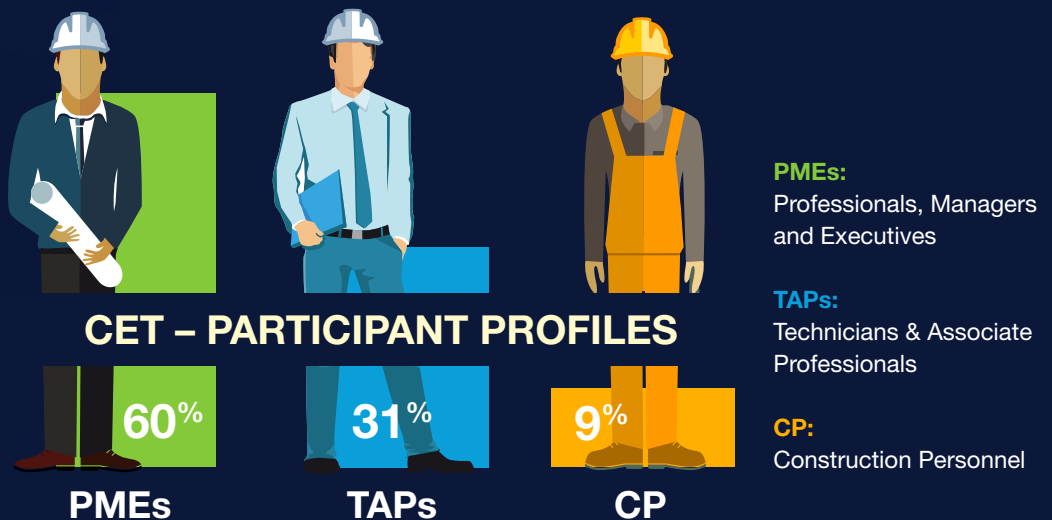
# High-Impact

Business leaders today will need to re-imagine and re-invigorate business operations and strategies, to be agile and transform to a transitional leader. Equally important, building up a leadership pipeline will ensure continuous sustainability for the business.

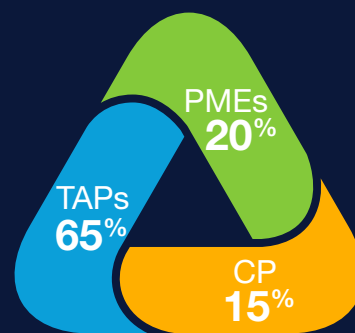
Exposing these leaders, at the appropriate stage of their careers, to differing tasks will deepen their understanding of business operations and strategic thinking to deliver high-impact results in the longer term.

- Established since 1984
- Cumulative trainees > 1,200,000 people

## 2019 Statistics



 **221**  
Programmes



 **57,000**  
Training Hours

# 4 KEY FOCUS AREA

Enhancing Capability  
and **FUTURE SKILLS**

Built Environment  
**LEADERSHIP  
DEVELOPMENT**

**BE KNOWLEDGE HUB**  
through **PARTNERSHIPS**

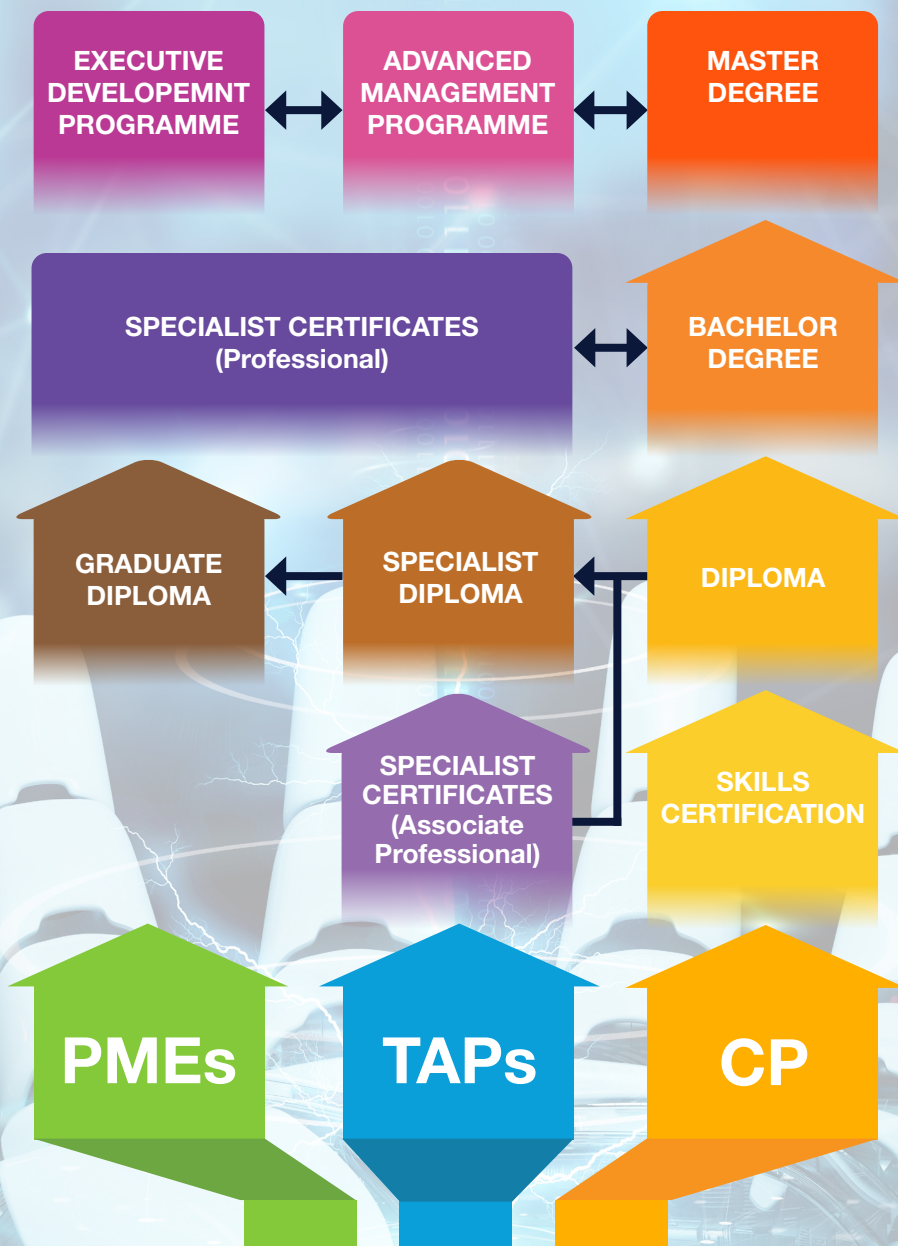
**ADVANCED LEARNING  
INSTITUTION** and  
**LIVING LAB**



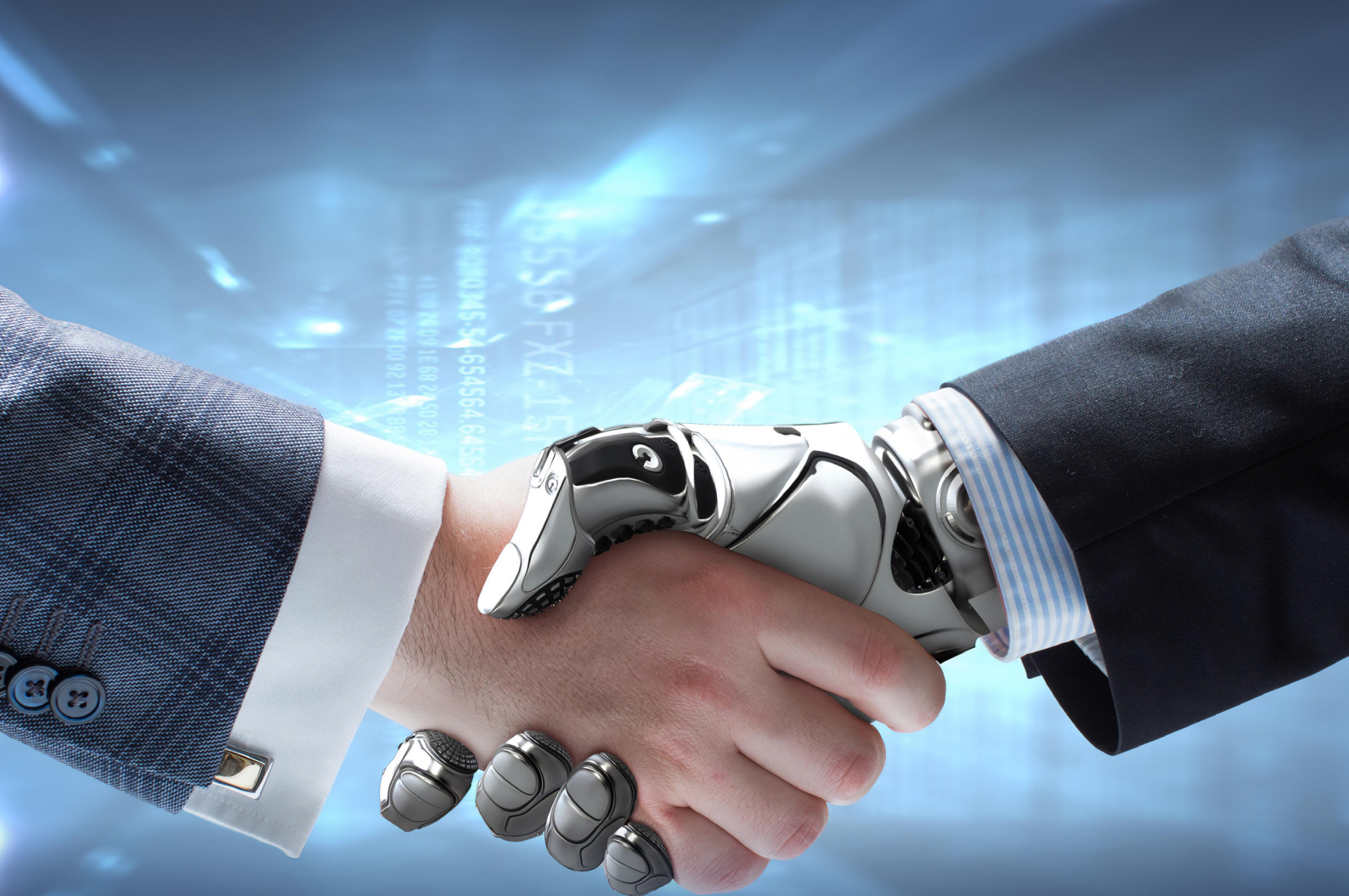
FORGE AHEAD. TOGETHER.

# Inquisitive Mind

The drive for excellence requires a constant quest for curiosity – how can I do the same thing differently? How can the processes be improved to help me achieve better efficiency?







FORGE AHEAD. TOGETHER.

# Partnership

The world has become more integrated and interlinked. This calls for more collective collaboration amongst the industry stakeholders to achieve common goals.

It is imperative that industry trade associations, educational institutions, professional bodies, and also public agencies come together to establish strategic partnership to deliver a consolidated vision to strengthen the entire ecosystem and community.







FORGE AHEAD. TOGETHER.

# Perspectives & Insights

The advancement of digital technology and internet-of-things have leapfrogged the global economy. Organisations and individuals can only continue to progress with the right perspectives and insights that will propel greater achievement.



# PMES

## Professional, Managers & Executives

The Professional, Managers and Executives (PMES) is an important group in any organisation. They contribute significantly to the planning and operation, at the strategic and operational level, of businesses. In today's global economy, the PMEs must strive to be upskilled and re-skilled, so that they are equipped with the knowledge to be future-ready, resilient, and future-proof, to enable them to enhance their overall productivity and competitiveness to meet the business needs.



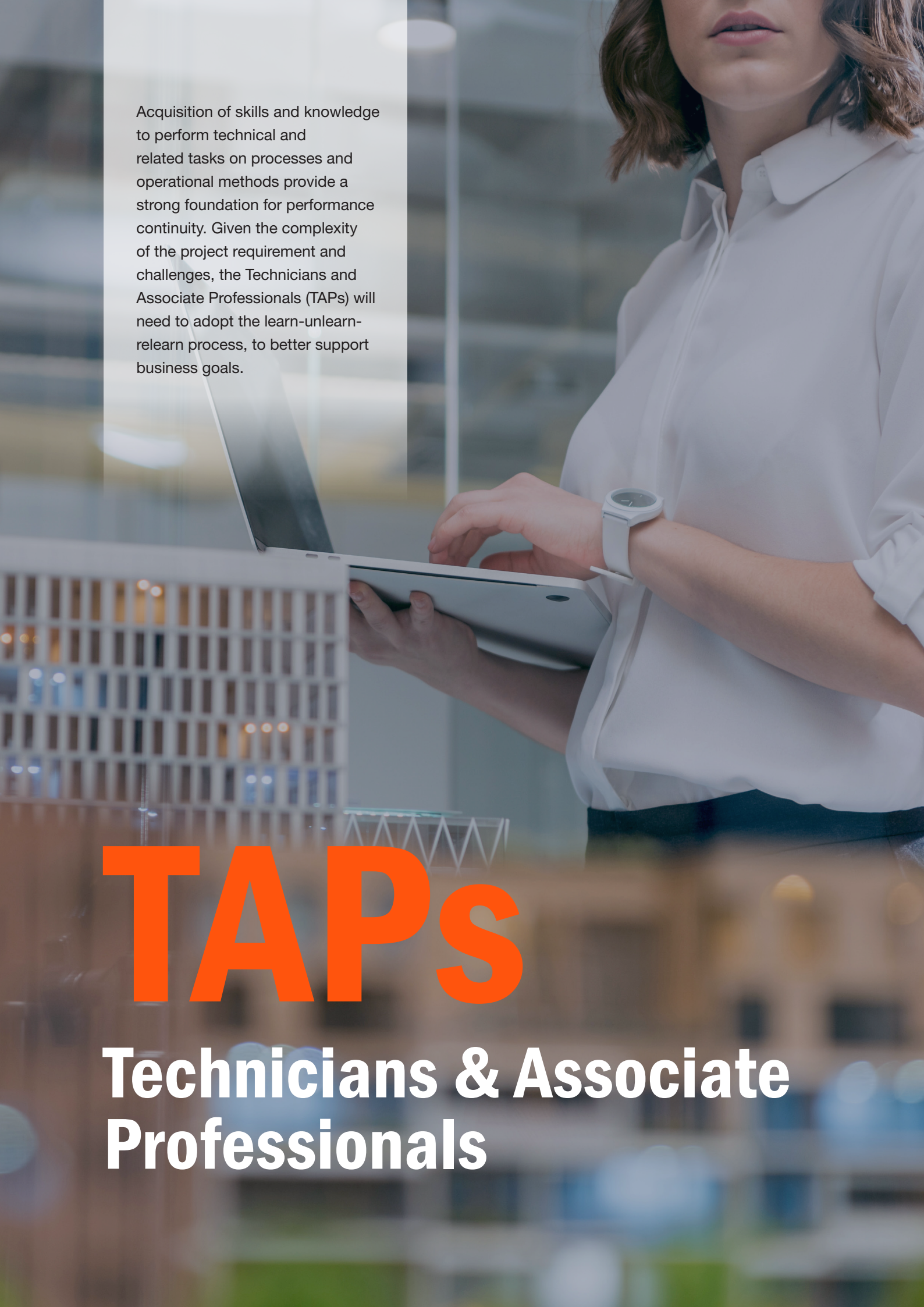
CIVIL & STRUCTURAL ENGINEERING									
Code	Course Title	Duration	Fee (Incl of GST)	Nett Fee after Funding (T&C apply)	Level				
					1	2	3	4	
77079	Building Control Regulations for Site Supervisors	0.5 day	\$150	--	★				
77040	Certificate in Concrete Technology	2 days	\$850	--	★	★			
78015	Design of Concrete Structures – Eurocodes versus British Standards	2 days	\$690	--		★	★		
77086	Geotechnical Design using Eurocode 7	5 evenings	\$935	--		★	★		
73064	Geotechnical Instrumentation for Engineers	4 evenings	\$800	--		★			
78051	Performance-Based Design for Fire Safety	2 days	\$850	--		★			
79081	Registered Earthworks Supervisor Course	2 days / 4 evenings	\$500	--	★				
73078	Site Investigation for Engineers	4 evenings	\$770	--		★			
DESIGN FOR MANUFACTURING AND ASSEMBLY (DfMA)									
78029	Basic Concept in Construction Productivity Enhancement (BCCPE)	0.5 day	\$85	--	★				
80067	BCA-STAS Introductory course on Modular MEP Design and Prefabrication	2 days	\$720	\$114.39		★	★		
81023	Code of Practice on Buildability	0.5 day (am)	\$195	--	★	★			
77053	Site Management of Precast Concrete Construction	3 evenings	\$525	\$185.98		★	★		
80078	Supervision of Prefabricated Prefinished Volumetric Construction (PPVC) Projects	2 days	\$820	\$283.55		★	★		
79086	The Basics of Design for Manufacturing and Assembly (DfMA)	1 day	\$350	\$55.61	★	★			
FACILITIES MANAGEMENT (FM)									
79090	Fire Safety Manager Course	14 evenings + 1 half-day site visit	\$1,400	S'porean/PR - \$770 S'porean with MCES - \$222.43 S'porean with WTS - \$157.01			★		
80022	Maintenance of Electrical equipment for FM Personnel	1 day	\$395	--	★	★			
80072	Introduction to Smart Building Management System for FM Practitioners	2 days	\$1,400	--	★	★			
GREEN BUILDINGS									
78078	Building Automation Concepts, Technologies and Practices for Green Buildings	1 day	\$500	--		★			
80053	Building Performance Simulation	3 days	\$1,250	--		★			
71925	Certification Course for Green Mark Accredited Professional (GM AP)	4.5 days	\$1,220	\$725.00 / \$193.83 (SSG)	★	★			
77D01	Certification Course for Green Mark Accredited Professional (Facilities Management) [GM AP(FM)]	4.5 days	\$1,220	\$800.00 / \$193.83 (SSG)	★	★			
80056	Certification Course for Green Mark Advanced Accredited Professional (GM AAP)	22.5 days	\$8,090	\$6,177.50 / \$2,090 (SSG)		★	★		
80057	Certification Course for Green Mark Advanced Accredited Professional (Facilities Management) [GM AAP(FM)]	21.5 days	\$7,840	\$6,145 / \$2,190 (SSG)		★	★		
80039	CFD Modelling for Natural Ventilated Buildings	3 days	\$1,660	--		★			
80028	Computational Fluid Dynamics Simulation Using Open Source Software	7 evenings	\$1,470	--		★	★		
80045	Design, Optimisation and Measurement of High Efficiency Central Air-Conditioning System	4 days	\$1,200	--		★			
71929	Efficient Building Envelope Design, ETTV and RETV	2 days	\$690	--		★			
78085	Energy Efficiency for Electrical Systems	2 days	\$825	--		★			
78065	Energy Efficiency through Management and Audit	2 days	\$930	--		★			
73085	Green Architecture & the Integrated Design Process	1 day	\$500	--		★			
80041	Green Mark for Super Low Energy Buildings - Active and Passive Strategies	2 days	\$650	--	★	★			
78027	Green Mark Refresher Course	0.5 Day	\$200	--	★				
78084	Indoor Air Quality Management for Buildings	2 days	\$930	--		★			
80072	Introduction to Smart Building Management System for FM Practitioners	2 days	\$1,400	--	★	★			
73079	Requirements for Environmental Sustainability in Buildings and The Green Mark Scheme	1 day	\$310	--	★				
78066	Retro-Commissioning and Performance Contracting	3 days	\$1,470	--		★			
80046	Solar Architecture	2 days	\$650	--		★			
73086	Solar Modelling	3 days	\$1,200	--		★			
80052	Strategies for Passive Design and Maintainability	2 days	\$770	--		★	★		
80054	Strategies for SMART FM & Maintainability	2 days	\$790	--		★	★		
77085	Sustainable Hot Water and Heat Recovery Systems	1 day	\$500	--		★			
78053	Sustainable Lighting Design and Technology	2 days	\$930	--		★			



INTEGRATED DIGITAL DELIVERY (IDD)								
Code	Course Title	Duration	Fee (Incl of GST)	Nett Fee after Funding (T&C apply)	Level			
					1	2	3	4
80023	BIM for Building Lifecycle and Facility Management	2 days	\$680	\$108.04	★			
78096	BIM Quantity Take Off	2 days	\$800	\$276.64	★	★		
78097	BIM Scheduling and Process Management	2 days	\$800	\$276.64	★	★		
79059	Certification Course in BIM for MEP Coordination	2 days	\$925	\$231.07		★	★	
77076	Certification Course in BIM Management	4 days	\$1,400	\$407.48	★	★	★	
78087	Computational BIM	2 days	\$700	\$111.21	★	★		
80066	IDD Project Implementation	5 x 0.5 days	\$1,600	\$254.21		★	★	
78089	Managing Workflow and Achieving Plan Reliability	2 days	\$600	\$207.48		★		
80065	Principles of Integrated Digital Delivery	Online	\$450	\$71.50	★	★		
80026	Principles & Application of Data Analytics	2 days	\$800	--		★		
LEADERSHIP & MANAGEMENT								
80047	SMU-BCA Advanced Management Programme	6 days	\$13,500	\$7,192				★
80011	Imperial College London-BCA Executive Development Programme on DfMA & IDD Leadership	5 days	\$7,200	\$720				★
80055	Tsinghua-BCA Built Environment Leadership Immersion	5 days	\$9,500	\$2,850				★
80043	SMU-BCA Executive Development Programme	8 days	\$12,300	\$4,254		★	★	
80044	SUTD-BCA Innovation Bootcamp	4 days	\$5,000	\$1,729		★	★	
M&E ENGINEERING								
79072	Design and Maintenance of Kitchen Exhaust Systems for Hawker Centres	1 day	\$380	--	★	★		
80079	Essential Knowledge on Lift Type Testing Safety Components and Examinations using SS 550	5 evenings	\$680	--		★	★	
78081	Lift and Escalator Course for Engineers	5 days + 1 hr assessment	\$3,450	\$ 2,880 / \$1,550 (SSG)			★	★
80032	Lift and Escalator Course for Inspectors	4 days + 1 hr assessment	\$2,550	\$ 2,137.50 / \$1,175 (SSG)		★	★	
80052	Strategies for Passive Design and Maintainability	2 days	\$770	--		★	★	
PROJECT MANAGEMENT & CONTRACTS								
80063	Advanced Life Cycle Costing for Project Planning and Design	2 days	\$700	--			★	★
78077	Application for Extension of Time - Factors for Success	3 evenings	\$550	--	★	★		
79073	Effective People Management for Construction Professionals	2 days	\$960	--	★	★		
79084	Finance for Non-Finance Professionals in the Built Environment	2 days	\$800	--	★			
80049	Life Cycle Costing for Project Planning	0.5 day	\$220	--	★	★		
73007	Project Management	3 days	\$1,280	\$442.62	★	★		
QUALITY								
78048	Best Practices for Green and Gracious Builder - Improving Performance and Site Practices	1 day	\$400	--	★			
73054	Certified QM/CONQUAS Managers Course	3 days	\$1,050	--	★	★		
81B02	CONQUAS Training for Builders (English)	1 day	\$380	--	★			
81A02	CONQUAS Training for Developers & Consultants	1 day	\$380	--	★			
81020	Good Industry Practices (Aluminium Window)	1 day	\$410	--	★			
81025	Good Industry Practices (Drywall Installation including Wet Areas Application)	1 day	\$410	\$124.02	★			
81017	Good Industry Practices (Marble/Granite/Ceramic Tiling)	1 day	\$410	--	★			
81018	Good Industry Practices (Painting)	1 day	\$410	--	★			
81024	Good Industry Practices (Timber Doors, Wardrobe & Kitchen Cabinet)	1 day	\$410	--	★			
81021	Good Industry Practices (Timber Flooring)	1 day	\$410	\$124.02	★			
81022	Good Industry Practices (Waterproofing for External Wall)	1 day	\$410	--	★			
81019	Good Industry Practices (Waterproofing for Internal Wet Areas)	1 day	\$410	--	★			
76069	Internal Quality Audit Based On ISO 9001 (Quality), ISO 14001 (Environment) & ISO 45001 (Health & Safety) Standards	2.5 days or 6 evenings	\$980	--	★			



REGULATIONS								
Code	Course Title	Duration	Fee (Incl of GST)	Nett Fee after Funding (T&C apply)	Level			
					1	2	3	4
78094	Application for Temporary Occupation Permit/Certificate of Statutory Completion	1 day	\$380	--	★	★		
73971	Essential Knowledge in Construction Regulations for Licensed Builders	2.5 days	\$740	--		★		
73966	Essential Knowledge in Local Regulations and Construction Practices	2.5 days	\$740	--		★		
80010	Essential of Contractors' All Risk Policy	1 day	\$380	--	★	★		
80058	Legislation Course for Managing Agents	3 days (blended learning)	\$460	\$245.04 / \$73.08 (SSG)	★	★		
79082	The Security of Payment Act – Technicalities and Practicalities	1 day	\$420	--	★	★		
78093	Understanding Building Control Regulations - Household and Storey Shelters	0.5 day	\$200	--	★	★		
SAFETY - WSH PROFESSIONALS								
76A68	Specialist Diploma in Workplace Safety and Health	10 months / evening	\$7,770	\$1,234.47			★	
77A08	Graduate Certificate in Workplace Safety and Health	7 months / evening	\$3,570	\$573.53				★
SAFETY - MANAGERS / SUPERVISORS								
44100	Applying Data Analytics Approach to Workplace Safety and Health	2 days	\$610	\$580		★		
80077	Antigen Rapid Test (ART) Self-Swab Supervision for Built Environment (Non-Construction Worksites)	0.5 day	\$90	--	★			
77018	Behavioural Safety for the Construction Industry	2 days	\$490	--		★		
79092	Certificate in Façade Inspection	3.5 days	\$1,500	\$1,147.50 / \$325	★	★		
77087	Certification Course for Site Investigation Supervisors	4 evenings	\$700	--		★		
46020	Demolition Course for Renovation Contractors	1 day	\$210	\$35	★			
73053	Develop a Risk Management Implementation Plan (bizSAFE Level 2)	2 days	\$470	\$74.67		★		
77034	Develop a Workplace Safety and Health Management System Implementation Plan (bizSAFE Level 4)	4 days	\$740	\$117.57			★	
44091	Manage Financial Resources for WSH	7 evenings	\$495	\$78.64		★		
45010	Managing Noise in Construction Site	1 day	\$410	To be advised		★		
44079	Practical Application of WSH Legislations in Construction Projects through Case Studies	2 days	\$600	\$570		★		
80073	Supervisors Course: Self-administered Antigen Rapid Test (ART) for the Built Environment Sect	2 x 0.5 days	\$250	--		★		
78037	Workshop for Company CEO/Top Management (bizSAFE Level 1)	0.5 day (pm)	\$160	--	★			

A woman with brown hair, wearing a white button-down shirt and a white smartwatch, is working on a silver laptop. She is standing in front of a large window that looks out onto a city skyline at night. The background is blurred, showing lights from buildings and a bridge. The overall tone is professional and modern.

Acquisition of skills and knowledge to perform technical and related tasks on processes and operational methods provide a strong foundation for performance continuity. Given the complexity of the project requirement and challenges, the Technicians and Associate Professionals (TAPs) will need to adopt the learn-unlearn-relearn process, to better support business goals.

# TAPs

## Technicians & Associate Professionals

CIVIL & STRUCTURAL ENGINEERING								
Code	Course Title	Duration	Fee (Incl of GST)	Nett Fee after Funding (T&C apply)	Level			
					1	2	3	4
77040	Certificate in Concrete Technology	2 days	\$850	--	★	★		
80019	Design of Flat or Irregular Slabs, Frames and Joints	1.5 days	\$900	--			★	★
79095	Fire Design of Concrete and Timber Structures to EC 2 and EC 5	2 days	\$850	--		★		
77086	Geotechnical Design using Eurocode 7	5 evenings	\$935	--		★	★	
73064	Geotechnical Instrumentation for Engineers	4 evenings	\$800	--		★		
78051	Performance-Based Design for Fire Safety	2 days	\$850	--		★		
79081	Registered Earthworks Supervisor Course	2 days / 4 evenings	\$500	--	★			
73078	Site Investigation for Engineers	4 evenings	\$770	--		★		
DESIGN FOR MANUFACTURING AND ASSEMBLY (DfMA)								
78029	Basic Concept in Construction Productivity Enhancement (BCCPE)	0.5 day	\$85	--	★			
88067	BCA-STAS Introductory course on Modular MEP Design and Prefabrication	2 days	\$720	\$114.39		★	★	
81023	Code of Practice on Buildability	0.5 day (am)	\$195	--	★	★		
77053	Site Management of Precast Concrete Construction	3 evenings	\$525	\$210.98		★	★	
80078	Supervision of Prefabricated Prefinished Volumetric Construction (PPVC) Projects	2 days	\$820	\$283.55		★	★	
79086	The Basics of Design for Manufacturing and Assembly (DfMA)	1 day	\$350	\$55.61	★	★		
CERTIFICATION COURSES FOR SUPERVISORS								
77036	Builder Certificate in Plumbing & Pipefitting	6 months (day) / 11 months (evening)	\$4,050	\$643.45		★		
78009	Certificate in Gas Technology	20 evenings or 10 days	\$2,140	\$340		★		
71003	Certificate in Levelling & Setting-Out	3 months (evening)	\$3,400	SSG: \$1,207 Enhance Funding for SME: \$540.19 S'porean with Mid- Career Enhanced: \$540.19		★		
74008	Certificate in Pavement Construction & Maintenance	6 months (evening)	\$3,150	To be advised		★		
74009	Certificate in Precast Concrete Construction Supervision	4 months (evening)	\$2,900	SSG: \$1,370 Enhance Funding for SME: \$650 S'porean with Mid-Career Enhanced: \$650		★		
FACILITIES MANAGEMENT (FM)								
80072	Introduction to Smart Building Management System for FM Practitioners	2 days	\$1,400	--	★	★		
80022	Maintenance of Electrical equipment for FM Personnel	1 day	\$395	--	★	★		
INTEGRATED DIGITAL DELIVERY (IDD)								
77A75	Certification Course in BIM Modelling (Architecture Track)	4 days	\$1,980	\$854.77	★	★		
77M75	Certification Course in BIM Modelling (MEP Track)	4 days	\$1,980	\$854.77	★	★		
77S75	Certification Course in BIM Modelling (Structure Track)	4 days	\$1,980	\$854.77	★	★		
M&E ENGINEERING								
79072	Design and Maintenance of Kitchen Exhaust Systems for Hawker Centres	1 day	\$380	--	★	★		
77A51	Refresher Course for Licensed Electrical Workers (Electricians)	1 day	\$210	--		★		
77051	Refresher Course for Licensed Electrical Workers (Technicians & Engineers)	1 day	\$270	--		★		
PROJECT MANAGEMENT & CONTRACTS								
76052	Certification Course on Construction Law & Contracts	12 evenings	\$2,050	--	★	★	★	
73003	Construction Contract Administration	2 days	\$930	--	★	★		
79089	Construction Contract Procurement & Negotiations	2 days	\$750	--	★	★		
80027	Construction Contract Drafting & Dispute Resolution	2 days	\$700	--	★	★		
79084	Finance for Non-Finance Professionals in the Built Environment	2 days	\$800	--	★			



PROJECT MANAGEMENT & CONTRACTS								
Code	Course Title	Duration	Fee (Incl of GST)	Nett Fee after Funding (T&C apply)	Level			
					1	2	3	4
77029	Preparing and Defending Loss and Expense Claims	1 day	\$445	--	★	★		
73099	Project Management for Professionals in the Building and Construction Industry	5 days	\$2,050	\$708.88	★	★		
79067	PSSCOC Contract Administration Essentials	1 day	\$380	--	★	★		
QUALITY								
78048	Best Practices for Green and Gracious Builder - Improving Performance and Site Practices	1 day	\$400	--	★			
81B02	CONQUAS Training for Builders (English)	1 day	\$380	--	★			
81020	Good Industry Practices (Aluminium Window)	1 day	\$410	--	★			
81025	Good Industry Practices (Drywall Installation including Wet Areas Application)	1 day	\$410	\$124.02	★			
81017	Good Industry Practices (Marble/Granite/Ceramic Tiling)	1 day	\$410	--	★			
81018	Good Industry Practices (Painting)	1 day	\$410	--	★			
81024	Good Industry Practices (Timber Doors, Wardrobe & Kitchen Cabinet)	1 day	\$410	--	★			
81021	Good Industry Practices (Timber Flooring)	1 day	\$410	\$124.02	★			
81022	Good Industry Practices (Waterproofing for External Wall)	1 day	\$410	--	★			
81019	Good Industry Practices (Waterproofing for Internal Wet Areas)	1 day	\$410	--	★			
REGULATIONS								
78094	Application for Temporary Occupation Permit/Certificate of Statutory Completion	1 day	\$380	--	★	★		
77079	Building Control Regulations for Site Supervisors	0.5 day (am)	\$150	--		★		
73966	Essential Knowledge in Local Regulations and Construction Practices	2.5 days	\$740	--		★		
71015	Renovation for Public Housing (English)	2 days Webinar + Self-learning	\$370	--	★	★		
80054	Strategies for SMART FM & Maintainability	2 days	\$790	--		★	★	
79082	The Security of Payment Act – Technicalities and Practicalities	1 day	\$420	--	★	★		
SAFETY - WSH PROFESSIONALS								
46A17	Certificate in Workplace Safety and Health	6 months / evening	\$3,100	\$492.52	★			
76B43	Advanced Certificate in Workplace Safety and Health	7 months / evening	\$4,400	\$699.06		★		
SAFETY - MANAGERS / SUPERVISORS								
44100	Applying Data Analytics Approach to Workplace Safety and Health	2 days	\$610	\$ 580		★		
79092	Certificate in Façade Inspection	3.5 days	\$1,500	\$1,147.50 / \$325	★	★		
77087	Certification Course for Site Investigation Supervisors	4 evenings	\$700	--		★		
44083	Developing a Lifting Plan for Crane Lifting Operations	2 days	\$500	\$472		★		
44091	Manage Financial Resources for WSH	7 evenings	\$495	\$78.64		★		
45010	Managing Noise in Construction Site	1 day	\$390	\$ 374		★		
44079	Practical Application of WSH Legislations in Construction Projects through Case Studies	2 days	\$600	\$570		★		

The development of Singapore, including its world-class infrastructure, airports, seaports, high-rise buildings etc, would not have attracted global attention if not for the contribution of the construction personnel (or tradesmen as they are more commonly known). Recognising the need to gear up for greater productivity and efficiency, the construction personnel must also be retrained to be multi-skilled, to deliver the project objectives.

A close-up photograph of a construction worker. The worker is wearing a blue long-sleeved uniform shirt and a bright yellow hard hat. They are holding a pair of silver pliers in their gloved hand. The background is a solid dark blue color.

# CP

# Construction Personnel

CERTIFICATION COURSES FOR TRADESMAN									
Code	Course Title	Duration	Fee (Incl of GST)	Nett Fee after Funding (T&C apply)	Level				
					1	2	3	4	
43005	Basic Electrical Maintenance	8 days or 15 evenings	\$1,000	\$895	★				
43004	Basic Plumbing Maintenance	8 days or 15 evenings	\$1,000	--	★				
42029	Essential Knowledge for Waterproofing Workers	1 day	\$230	--	★				
71009	Gas Service Workers Course	18 evenings	\$1,850	--		★			
41005	Installation of Structural Supports for Air-con Condensing Units	2 days or 4 evenings	\$610	\$285	★				
CORETRADE COURSES FOR TRADESMAN									
48001	CoreTrade Supervisors (Structural)	35 hours (4.5 days or 12 evenings)	\$1,070	\$194.14		★			
48002	CoreTrade Supervisors (Architectural)	35 hours (4.5 days or 12 evenings)	\$1,070	\$194.14		★			
48003	CoreTrade Supervisors (Mechanical & Electrical)	35 hours (4.5 days or 12 evenings)	\$1,070	\$194.14		★			
48004	CET for CoreTrade Supervisor (Structural)	1 day or 2 evenings	\$375	--		★			
48005	CET for CoreTrade Supervisor (Architectural)	1 day or 2 evenings	\$375	--		★			
48006	CET for CoreTrade Supervisor (Mechanical & Electrical)	1 day or 2 evenings	\$375	--		★			
PLANT OPERATION									
44070	Approved Crane Erector for Approved Crane Contractors (Tower Crane)	3 days or 8 evenings	\$700	--		★			
44000	Bridging Course for Crane Operators	5 days or 3.5 days	\$1,400 / \$950	--		★			
44075	CET for Construction Plant Operation (Lifting)	0.5 day	\$175	--		★			
44064	Crawler Crane Operation (Theory & Practical)	12 days	\$2,772 (Local) \$2,985 (Foreign)	\$440.41	★				
44083	Developing a Lifting plan for Crane Lifting Operations	2 days	\$500	\$472		★			
44018	Hydraulic Excavator Operation	9 days or 18 evenings	\$1,900	\$301.87	★				
44003	Luffing Jib Tower Crane Operation	4 days	\$950	\$262.50		★			
44066	Mobile Crane (Truck Mounted) Operation (Theory & Practical)	12 days	\$2,770 (Local) \$2,985 (Foreign)	\$440.09	★				
44084/5/6	PPVC Lifting Course for Crane Operators (Tower/Crawler/Mobile)	1 day	\$710	\$695		★			
44019	Telescopic Handler Operation	6 days	\$1,450	\$1,368	★				
44068	Tower Crane Operation (Theory & Practical)	12 days	\$2,772 (Local) \$2,985 (Foreign)	\$440.41	★				



The rapid development and evolving business environment in the construction sector provides a strong impetus for continuing education and training, to elevate individual and organisational excellence. Building on specialised skills in niche disciplines will lead to better opportunities for career advancement and deepen knowledge to facilitate overall performance at the individual and organisational level.



# ACADEMIC EXCELLENCE

SPECIALIST DIPLOMA PROGRAMMES								
Code	Course Title	Duration	Fee (Incl of GST)	Nett Fee after Funding (T&C apply)	Level			
					1	2	3	4
Specialist Diploma in Architectural Technology				3 months per modular certificate				
79004A	Certificate in Architectural BIM Submission	Jan - Mar	\$2,000	To be advised		★	★	
79004B	Certificate in Sustainable Architectural Design	May - Jul	\$2,000	To be advised		★	★	
79004C	Certificate in Architectural Detailing & Building Services	Sep - Nov	\$2,000	To be advised		★	★	
Specialist Diploma in Building Information Modelling				3 months per modular certificate				
74056A	Certificate in BIM Design and Coordination	Jan - Mar / Jul - Sep	\$3,250	To be advised		★	★	
74056B	Certificate in BIM Construction and Coordination	Apr - Jun / Oct - Dec	\$3,250	To be advised		★	★	
Specialist Diploma in Building Cost Management				3 months per modular certificate				
74051A	Certificate in Building Cost Management (Project Management)	Jan - Mar	\$2,000	To be advised		★	★	
74051B	Certificate in Building Cost Management (Cost Control Management)	May - Jul	\$2,000	To be advised		★	★	
74051C	Certificate in Contract Administration	Sep - Nov	\$2,000	To be advised		★	★	
Specialist Diploma in Computational BIM (Building)				3 months per modular certificate				
79020A	Certificate in Computational Thinking and Programming	Jan - Mar / Jul - Sep	\$3,500	To be advised		★	★	
79020B	Certificate in Computational BIM Applications (Building)	Apr - Jun / Oct - Dec	\$3,500	To be advised		★	★	
Specialist Diploma in Computational BIM (Infrastructure)				3 months per modular certificate				
79020A	Certificate in Computational Thinking and Programming	Jan - Mar / Jul - Sep	\$3,500	To be advised		★	★	
79021B	Certificate in Computational BIM Applications (Infrastructure)	Apr - Jun / Oct - Dec	\$3,500	To be advised		★	★	
Specialist Diploma in Construction Management				3 months per modular certificate				
74037A	Certificate in Construction Management (MEP System)	Jan - Mar	\$2,166	To be advised		★	★	
74037B	Certificate in Construction Management (Architecture and Structure)	May - Jul	\$2,167	To be advised		★	★	
74037C	Certificate in Contract and Cost Management	Sep - Nov	\$2,167	To be advised		★	★	
Specialist Diploma in Construction Productivity				3 months per modular certificate				
79005A	Advanced Certificate in Construction Productivity	Jan - Mar / Jul - Sep	\$2,300	To be advised		★	★	
79005B	Certificate in Management of Productive Technologies	Apr - Jun / Oct - Dec	\$3,700	To be advised		★	★	
Specialist Diploma in Design for Manufacturing and Assembly				3 months per modular certificate				
79010A	Certificate in DfMA Principles and Applications	Jan - Mar / Jul - Sep	\$2,300	To be advised		★	★	
79005B	Certificate in Management of Productive Technologies	Apr - Jun / Oct - Dec	\$3,700	To be advised		★	★	
Specialist Diploma in Facility & Energy Management				3 months per modular certificate				
74A19	Certificate in Digital Delivery of Facilities Management	Jan - Mar	\$2,166	To be advised		★	★	
74B19	Certificate in Mechanical System and Building Management	May - Jul	\$2,167	To be advised		★	★	
74C19	Certificate in Electrical System & Energy Management	Sep - Nov	\$2,167	To be advised		★	★	
Specialist Diploma in Interior and Landscape Design				3 months per modular certificate				
74015A	Certificate in Interior Design (Residential & Office)	Jan - Mar	\$2,166	To be advised		★	★	
74015B	Certificate in Interior Design (Hospitality & Retail)	May - Jul	\$2,167	To be advised		★	★	
74015C	Certificate in Landscape Design	Sep - Nov	\$2,167	To be advised		★	★	
Specialist Diploma in MEP Modularisation				3 months per modular certificate				
79019A	Certificate in Prefabricated MEP System Integration	Jan - Mar / Jul - Sep	\$3,250	To be advised		★	★	
79019B	Certificate in Digital Delivery of Modular MEP	Apr - Jun / Oct - Dec	\$3,250	To be advised		★	★	
Specialist Diploma in M&E Coordination				3 months per modular certificate				
74033A	Certificate in Mechanical & Plumbing Systems	Jan - Mar	\$2,066	To be advised		★	★	
74033B	Certificate in Electrical & Telecommunication Systems	May - Jul	\$2,067	To be advised		★	★	
74033C	Certificate in MEP Planning & Site Management	Sep - Nov	\$2,067	To be advised		★	★	
Specialist Diploma in Smart Facilities Management				3 months per modular certificate				
74A19	Certificate in Digital Delivery of Facilities Management	Jan - Mar	\$2,166	To be advised		★	★	
79024B	Certificate in Planning and Management of Smart FM	May - Jul	\$2,417	To be advised		★	★	
79024C	Certificate in Integrated Facilities Management	Sep - Nov	\$2,417	To be advised		★	★	



SPECIALIST DIPLOMA PROGRAMMES									
Code	Course Title	Duration	Fee (Incl of GST)	Nett Fee after Funding (T&C apply)	Level				
					1	2	3	4	
Specialist Diploma in Underground Construction				3 months per modular certificate					
79014A	Certificate in Basic Geotechnical Engineering	Jan - Mar	\$2,000	To be advised		★	★		
79014B	Certificate in Underground Excavation	May - Jul	\$2,000	To be advised		★	★		
79014C	Certificate in Tunnelling Technique	Sep - Nov	\$2,000	To be advised		★	★		
Specialist Diploma in Virtual Design & Construction				3 months per modular certificate					
79012A	Certificate in Virtual Design & Construction Practices	Jan - Mar / Jul - Sep	\$3,000	To be advised		★	★		
79012B	Certificate in Virtual Design & Construction Process Management	Apr - Jun / Sep - Nov	\$3,000	To be advised		★	★		
POSTGRADUATE / UNDERGRADUATE DEGREE PROGRAMME									
--	PART TIME Bachelor of Construction Management (Building) <i>(Awarded by University of Newcastle, Australia)</i>	3.5 years	\$28,890 - \$44,940	--			★		
--	FULL TIME Bachelor of Construction Management (Building) <i>(Awarded by University of Newcastle, Australia)</i>	2.5 years	\$28,890 - \$44,940	--			★		
--	FULL TIME Bachelor of Civil Engineering (Honours) <i>(Awarded by University of Newcastle, Australia)</i>	3 years	\$40,125 - \$48,150	--			★		
		4 years	\$64,200						
--	PART TIME Bachelor of Building and Project Management <i>(Awarded by Singapore University of Social Sciences in partnership with BCA Academy)</i>	3 years	Direct Honours from \$21,164 Basic Degree from \$15,218.61 Refer to www.suss.edu.sg				★		
--	PART TIME Bachelor of Science in Facilities Management with Minor <i>(Awarded by Singapore University of Social Sciences in partnership with BCA Academy and Singapore Polytechnic)</i>	3 years	Direct Honours from \$21,164 Basic Degree from \$15,218.61 Refer to www.suss.edu.sg				★		
79062	PART TIME Master of International Construction Management with major in Construction Productivity <i>(Awarded by University of Florida, USA)</i>	2 years	US\$ 22,110	To be advised				★	
DIPLOMA PROGRAMMES (FULL-TIME)									
77027-S1	Diploma in Construction Engineering	3 years - 6 semesters	\$3,100 (S'porean) \$6,180 (S'pore PR) \$11,330 (Intl) (Per Year)	--		★			
79015-S1	Diploma In Digital Engineering					★			
79001-S1	Diploma In Quantity Surveying					★			
DIPLOMA PROGRAMMES (PART-TIME)									
Diploma in Construction Engineering									
77026A	Certificate in Structural Analysis	Apr - Aug	\$3,000	\$9,000 (SSG)		★			
77026B	Certificate in Construction Technology	Oct - Feb	\$3,000			★			
77026C	Certificate in Site Management	Oct - Feb	\$3,000			★			
77026D	Certificate in Reinforced Concrete Design	Apr - Aug	\$3,000			★			
77026E	Certificate in Structural Design	Apr - Aug	\$3,000			★			
SGUS PROGRAMMES (FULL-TIME)									
79023	Diploma (Conversion) in Integrated Digital Delivery	6 months	\$10,700	\$500.00		★			
79025	Diploma (Conversion) in Sustainable Design	6 months	\$18,000	\$500.00		★			

#### NOTES

- The courses and fees are strictly indicative and subject to confirmation.
- BCA Academy reserves the right to amend any details relating to the courses, revise the course fees, cancel or postpone the course without prior notice.
- Funding and subsidies offered by BCA / BCA Academy or third party organisations for the courses are subject to approval. The company must make the application for funding and subsidies. Neither BCA nor BCA Academy is to be held liable and the company agrees to pay BCA the applicable funding amount if funding and subsidies are either granted at a reduced amount, not granted at all or if funding is revoked, for whatever reason.
- Please note that the waiting time for some of the courses may be more than 2 months. Registration is on first-come-first-served basis.
- By submitting the course application, you will consent to BCA/BCA Academy to disclose your personal information to other government agencies/our authorised training partners relating to the application where relevant.
- For area of training that is not listed here, kindly contact BCA Academy for further details.
- For enquiries, please call **6248 9999** or email to **bca\_academy@bca.gov.sg**

All rights reserved. Information is accurate as of the date of print and subject to change without prior notice.





**BCA ACADEMY**

[www.bcaa.edu.sg](http://www.bcaa.edu.sg)

200 Braddell Road Singapore 579700