



Unlocking Seamless Data Exchange Across the Built Environment

One Connection, Endless Possibilities

Jefferson Wong
Chief Operating Officer
IMDA (DEX)

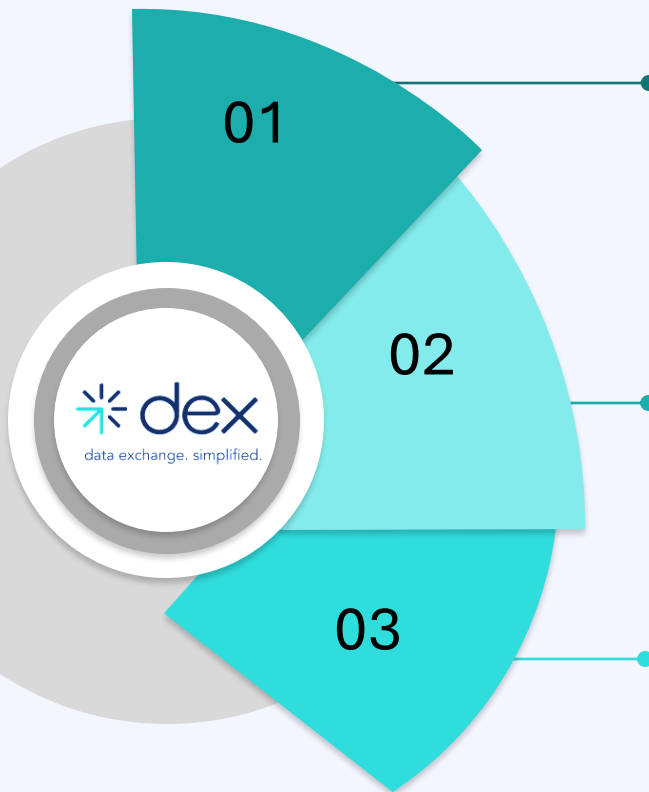
Imagine A World of Connectivity



A Data Exchange Utility for All

A part of the Singapore Digital Utility Stack in Singapore's Digital Connectivity Blueprint

>270 Participants and
4 million monthly transactions



Alliance for Action (AfA)

Industry-led coalitions, working in partnership with the Government, to prototype ideas in areas of opportunities or address a common challenge

Supply Chain **sgtradedx**

Powering SGTraDex for use cases in Maritime, Trade finance and Logistics

Construction **SGBUILDDEX**

Championed by BCA and HDB to power use cases in the Built Environment sector

DEX's Value Proposition

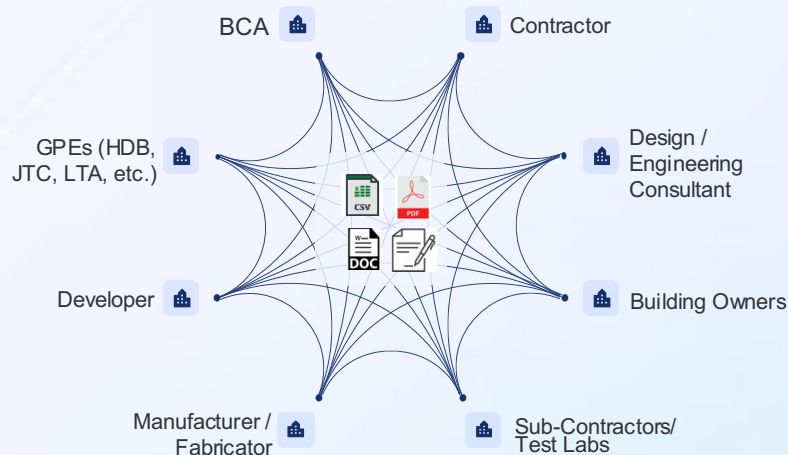
A simplified yet secure data sharing utility for sensitive and confidential data exchange.



Connect Once, Connect All

Your Data Sharing Experience Could Go From This...

Complicated webs of data exchange with your partners, suppliers, customers



...To This

A single point of connection that unlocks access to all the data you to share and receive in a single individual and secured pitstop

Harmonized data schemas allowing consistency while eliminating downstream inefficiencies

Our Proof-of-Concept (POC)

13

**Contractors and
Developers**

4

**API Integration with
Solution Providers**

52

**SIT/UAT Test Flows
Successfully
Completed**

5

Data Elements

3

**Dashboards Built for
Safety, Manpower,
Piling**

103

**Data Exchange
Validated and
Verified
Transactions**

Subject to change.

Proof-of-Concept

- 01 Single Connectivity that augments industry solutions
- 02 Standardized data elements enable productivity savings
- 03 Timely updates with no manual handling required
- 04 Ready for operational deployment



1. Reduces manual data entry mistakes

Prevents costly delays, rework, and **non-compliance issues** through standardized, automated data exchange

2. Potentially **reduces** audit frequencies, **freeing up resources** for **higher-value** tasks

3. Substantial **productivity savings** per project

75%

of ISPs rate integrations as “**Very Easy**”

92%

of participants are “**Satisfied**” with the Proof-of-Concept

100%

of ISPs rate API specifications as “**Comprehensive**”

100%

of participants found **multiple value points** through the PoC

Feedback from POC participants and Upcoming Partners

“SGBuildex’s goal of establishing a **single connection to multiple data sources** is an excellent additional enabler for REDAS’ Real Estate Analytics And Performance Indicators Dashboard (RAPID) initiative, a digital platform aiming to provide business decision insights for users through quality data“



Dr Gwee Seng Kwong
Project Director, REDAS

From Solution Providers

...allows for **seamless data exchange**

... **remove[s] the need of manual effort....**

“[ensures] **Security**

ensuring trust amongst the community....”

... **flexibility and control**

... **maximising the value....”**

INTERCORP



From Main Contractors

...enables **multiple and collective**

values for construction sector’s stakeholders

...**better user experience**

accelerating data-driven decisions....

connected and efficient

exchange data seamlessly..



BOUSTEAD
Projects



中国建筑（南洋）发展有限公司
CHINA CONSTRUCTION (SOUTH PACIFIC) DEVELOPMENT CO. PTE. LTD.



中国交通建设
CHINA COMMUNICATIONS CONSTRUCTION

Upcoming partners...



and more...



Strictly confidential. All rights reserved. No content can be reproduced without permission. Any graphics and texts in screenshots are subject to change.

Building and Construction

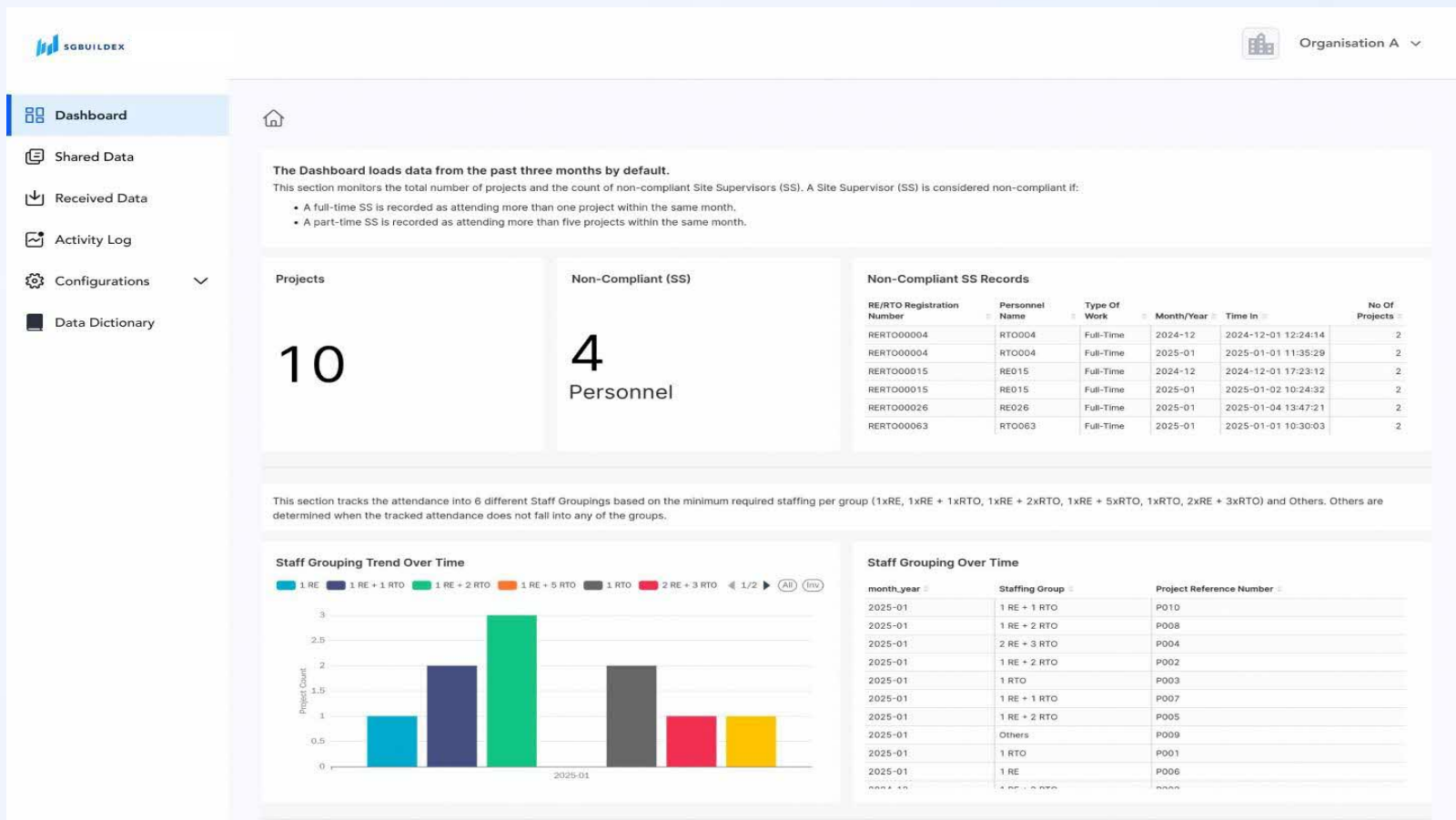


HOUSING &
DEVELOPMENT
BOARD

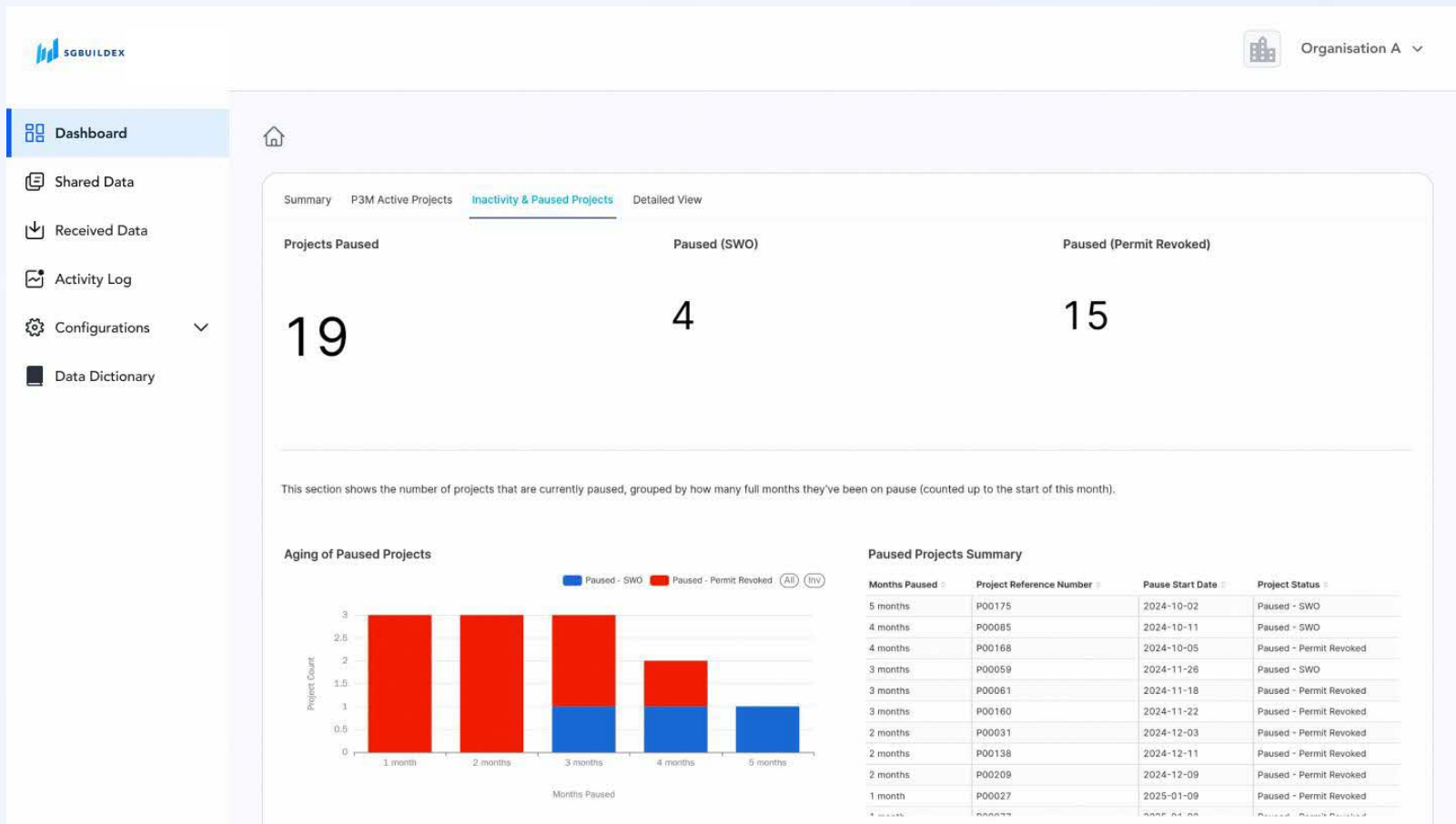


INFOCOMM
MEDIA
DEVELOPMENT
AUTHORITY

Unlocking Project Insights with Timely Quality Data



Unlocking Project Insights with Timely Quality Data



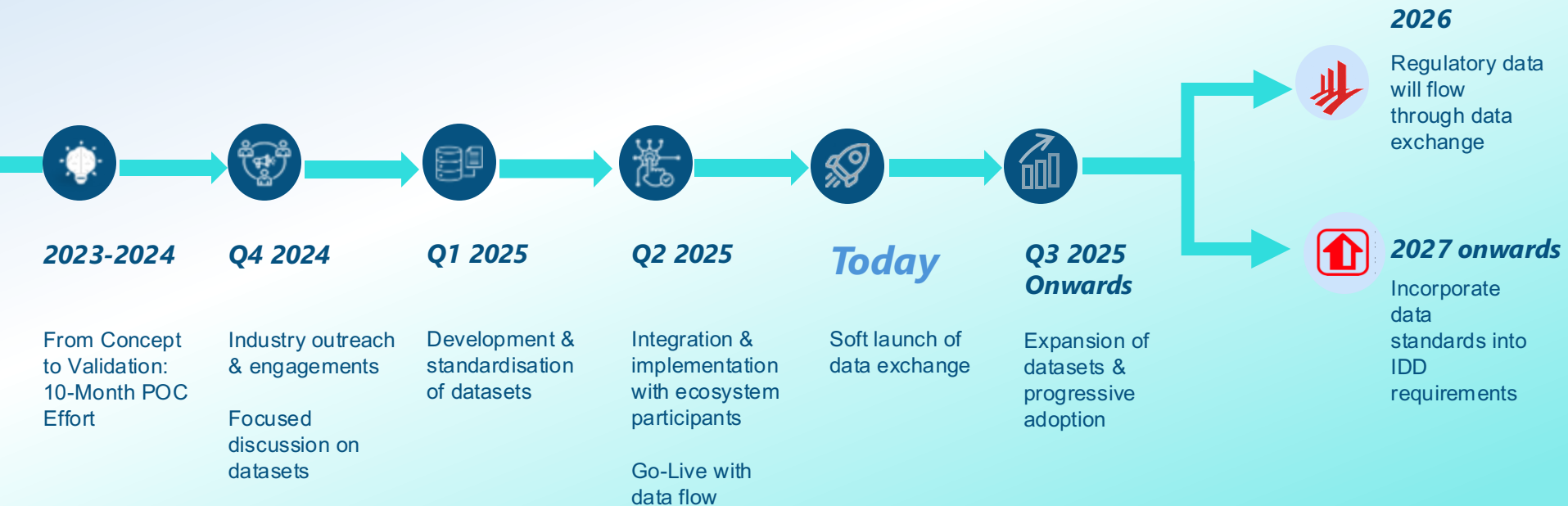
Overview of Data Standards

| Area | Data Schema | Structured Data | Unstructured Data |
|--------------|---------------------------------------|--|---|
| Safety | • Environment Health and Safety (EHS) | <ul style="list-style-type: none">• Safety Accident and Incident Reports• e-Permit To Work (ePTW)• Non-Conformity Report (NCR) /Site Negative Observation• Site Inspection Positive Observation• Environmental Management | |
| | • Structural Safety | <ul style="list-style-type: none">• QP/SS Attendance• Site Progress• Piling Installation Record• Working Load Test• Ultimate Load Test• Instrumentation & Monitoring Records• Annex C1 ERSS Approval• Annex D Building Monitoring Settlement• Concrete Cube Test• Steel Rebar Test Report• Steel Element Test Report | <ul style="list-style-type: none">• Commissioner of Building Control Notification• Pre-con Survey Report• Temporary Building Design• Welding Test Report• QP(D) Approval for Proprietary Product• 360 Captures• Piling Plan• Mass Engineered Timber (MET) Test Results |
| Productivity | • Manpower Management | <ul style="list-style-type: none">• Manpower Data• Offsite Facility Data | |
| Quality | • Digital QA/QC Inspections | <ul style="list-style-type: none">• Construction QA/QC Defects• Handover Status (Defects Monitoring at DLP) | |

Overview of Data Standards

| Area | Data Schema | Structured Data | Unstructured Data |
|------|--|--|-------------------|
| Time | <ul style="list-style-type: none">Digital Progress Monitoring | <ul style="list-style-type: none">Progress Monitoring of Key TradesSite Diary | |
| | <ul style="list-style-type: none">Digital Construction Scheduling & Sequencing | <ul style="list-style-type: none">Design Key MilestonesConstruction Key Milestones | |
| | <ul style="list-style-type: none">Digital Production | <ul style="list-style-type: none">Production ScheduleSite Diary | |
| | <ul style="list-style-type: none">Digital Logistic | <ul style="list-style-type: none">Digital Logistic Delivery Records | |
| | <ul style="list-style-type: none">Digital RFI | <ul style="list-style-type: none">Request for Information (RFI)Request for Approval (RFA) | |
| Cost | <ul style="list-style-type: none">Digital Submissions & Approvals | <ul style="list-style-type: none">Request Variation Order (RVO)Progress Claims | |

Next Steps and Key Milestones



A Whole-Of-Government (WOG) Effort

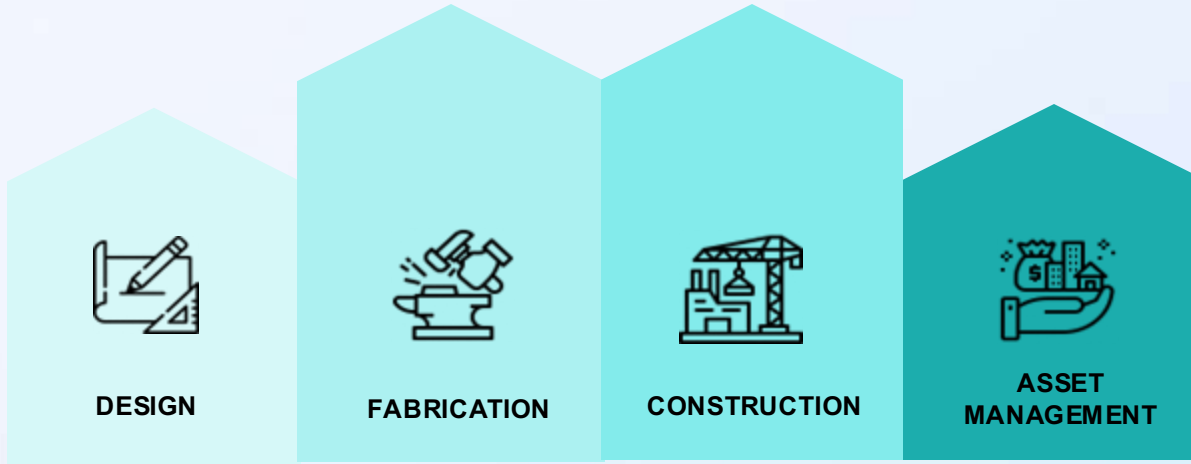


SGBuildex is building the foundations for digital Singapore just as HDB and BCA have built the physical one...

SGBuildex has the potential to change and transform the industry...

SGBuildex enhances and expands ongoing sector-wide efforts across agencies... to deliver meaningful impact ...

SGBUILD EX
6 FEBRUARY 2025



1. Scaling Through Modularity

Adding new data elements and personas

- Consultants/QP
- Sub/specialist contractors
- Test laboratory
- Certification bodies
- Developers/GPEs

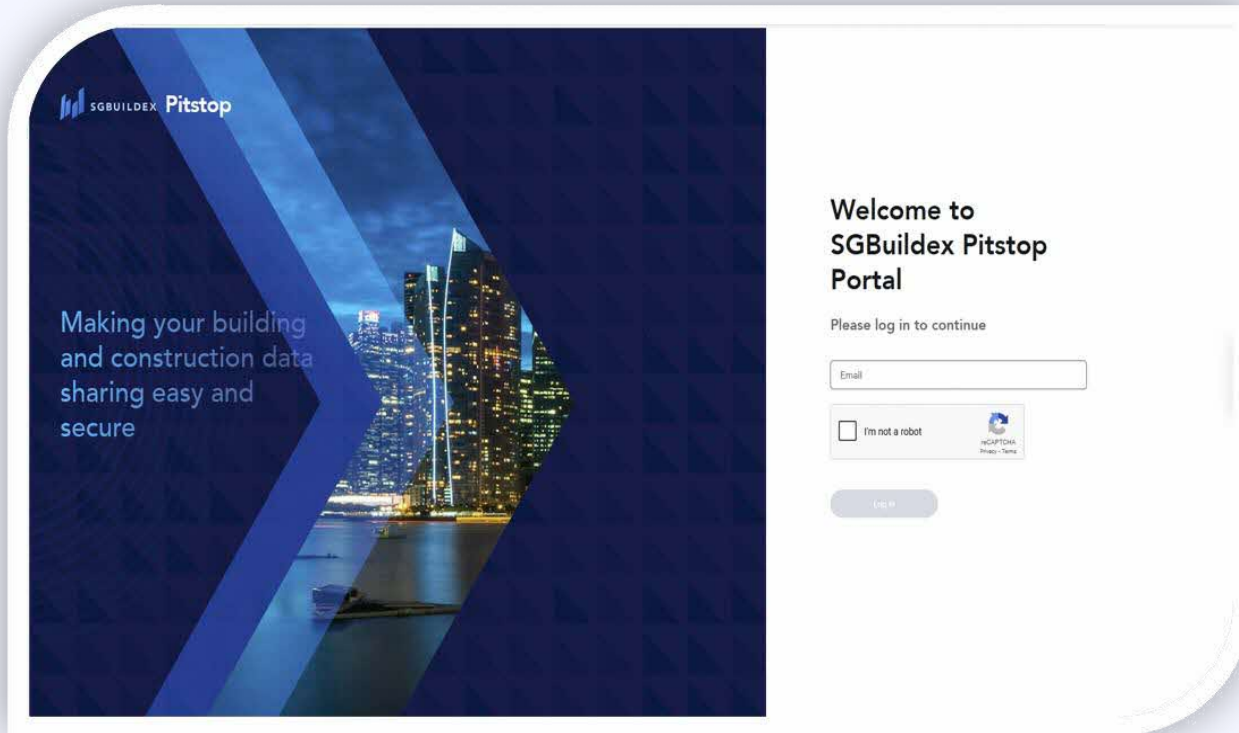


2. Expansion to Design, Asset Management and Adjacencies

- Infrastructure
- Industrial
- Workplace safety & health
- Carbon & sustainability

Kickstart your data exchange journey

Your SGBuildex experience starts today.



Register Now!

Sign up for a quick chat
with our team to get you
started!

