

## Certification Course on BIM for MEP Coordination

### INTRODUCTION

With advent of BIM, the design and installation conflicts among construction elements could be effectively identified, visualized and managed with the use of 3D BIM model. Mechanical, Electrical and Plumbing (MEP) coordination has been identified as one of the most complex tasks of the project delivery process. The BIM for MEP Coordination course aims to provide participants with the necessary knowledge and skills on how to achieve MEP spatial coordination through BIM with a greater degree of accuracy and collaboration. A series of hands-on, collaborative exercises will be conducted to simulate the real-world scenario of the coordination process from model review all the way to BIM translation to field. As such, participants are able to familiarize themselves with better, more efficient practices in MEP modelling, coordination, and collaboration, which will ultimately contribute to productivity and minimize reworks on site.

### OBJECTIVES

This course enables participants to:

- Understand the benefits and application of BIM for MEP coordination
- Overcome some of the challenges in the traditional MEP coordination process
- Apply best practices in MEP BIM modelling and coordination

### CONTENTS

This course has 5 training focuses:

- **MEP MODEL DEVELOPMENT:** To guide participants how to review, verify, and make full use of the BIM model which is passed from the upstream and develop the BIM model to the level of detail required for construction
- **PROJECT SETUP:** To introduce participants to different project team workflows, including “Big-room” and co-location concepts, as well as setting up project standards prior to modelling
- **MODELLING STRATEGIES:** To guide participants on modelling best practices and more efficient workflows
- **COORDINATION:** To train participants the lean process of MEP coordination through BIM as well as the typical issues in coordination and how best to resolve them
- **BIM TO FIELD:** To introduce participants on BIM application and technologies for field installation to reduce human error and mistranslation in actual installation

### ASSESSMENT AND AWARD

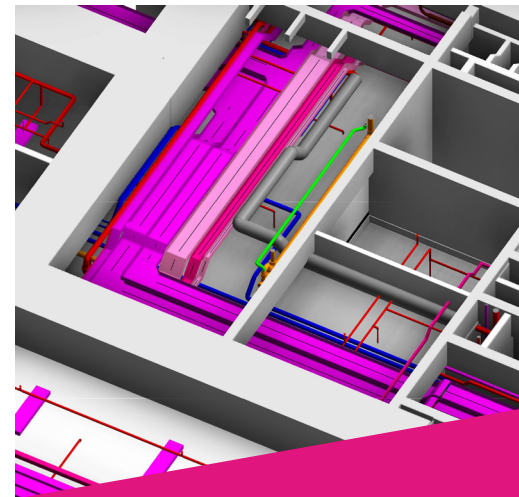
Certificate of Successful Completion (CSC) will be awarded to participants who meet the attendance requirement and pass the assessment.

### PREREQUISITE

Applicants for this BIM for MEP Coordination course should possess BIM MEP modelling experience.



To register, please log into our Online StoreFront (OSF) at <https://eservices.bcaa.edu.sg/registration/#/login> or scan QRcode and search for course code **79059**



### DETAILS

Date: 2 & 3 Dec 2021  
Duration: 2 days  
Time: 9.00am to 6.00pm  
Venue: BCA Academy

### FEES (INCL GST)

S\$925.00 (without subsidy)  
S\$231.07\* (with WTU funding support for eligible local participants)

*\* For information on the Workforce Training and Upgrading Scheme (WTU), please refer to: <https://www1.bca.gov.sg/buildsg/buildsg-transformation-fund/workforce-training-and-upgrading-scheme-wtu>*

### CPD POINTS

PEB: Pending

### TARGET AUDIENCE

Contractors, subcontractors and specialty contractors