

BIM Modelling (Architecture)

INTRODUCTION

Building Information Modelling (BIM) is a process that involves the generation and management of the information about a facility. BIM allows for great integration and collaboration among different building professionals of various disciplines to explore digitally, and can be used throughout the entire building process from design stage through construction stage and even post construction building management.

Currently, majority of the building plans have to be submitted in BIM format for regulatory approval. This 4-day Certification Course in BIM Modelling (Architecture / MEP / Structure track) aims to develop BIM capability and capacity in the industry so that firms could be ready for the full BIM implementation by 2015.

OBJECTIVES

The objectives of this course are:

- To provide an understanding of BIM processes and benefits
- To equip participants the practical 3D BIM Architectural Modelling skills and technical knowledge to start and support a project using BIM.
- To enable participants to be familiar with the e-submission template guideline

CONTENTS

- BIM fundamentals
- BIM Tool User Interface
- Modelling a project
 - Mass Modelling
 - Site Modelling
 - Visualization
 - Insert External files
 - Modelling building elements
 - Project documentation
- E-Submission project template
- Worksets and Worksharing
- DOL creation

LECTURERS

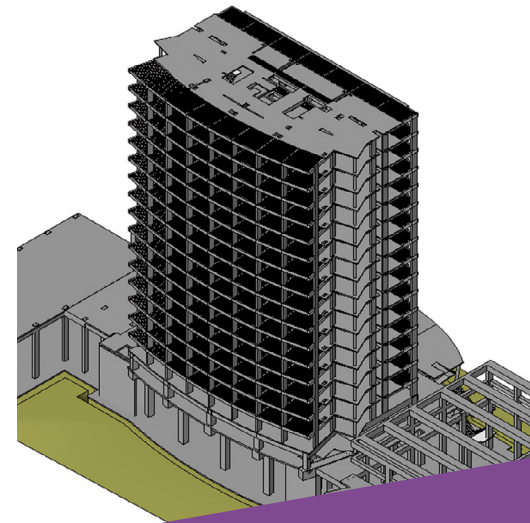
Practitioners from the built environment sector.

ASSESSMENT AND AWARD

Electronic Certificate of Successful Completion (e-CSC) will be awarded to participants who meet the attendance requirement and pass the required assessment.

PREREQUISITE

Applicants for this BIM Modelling Certification Course should possess CAD drafting / modelling experience in building and construction project.



DETAILS

Date: 20 – 23 Sep 2022

Duration: 4 days (32 hours)

Note: There will be interactive self-learning during the training.

Time: 9.00am to 6.00pm

Venue: BCA Braddell Campus

Fee (incl of GST): S\$2,150

SkillsFuture Singapore (SSG) funding is available for eligible participants as follows:

<i>Singaporeans 40 years old and above OR SME company sponsored Singaporeans or Singapore PRs. Fee payable after 70% funding support</i>	<i>S\$743.45 (incl of GST)</i>
<i>Singaporeans, Singapore PRs and non SME company sponsored participants. Fee payable after 50% funding support</i>	<i>S\$1,145.32 (incl of GST)</i>

Participant must achieve at least 75% attendance and pass all assessments. BCA Academy reserves the right to recover the funded amount from the participant (self-sponsored) or employer (company sponsored) if participant did not meet the eligibility criteria. Details of SSG's funding can be found in <https://www.enterprisejobskills.gov.sg/content/upgrade-skills/course-fee-and-absentee-payroll-funding.html> (TGS-2022012771)

In keeping with our green and sustainable practices, course notes will be available in e-format.

TARGET AUDIENCE

- Modellers
- Project Coordinators
- Designers
- Engineers
- Project Managers



REGISTRATION

Visit BCA Academy Online StoreFront (OSF) @
<https://eservices.bcaa.edu.sg/registration/#/login>
(Course code: 77A75)