

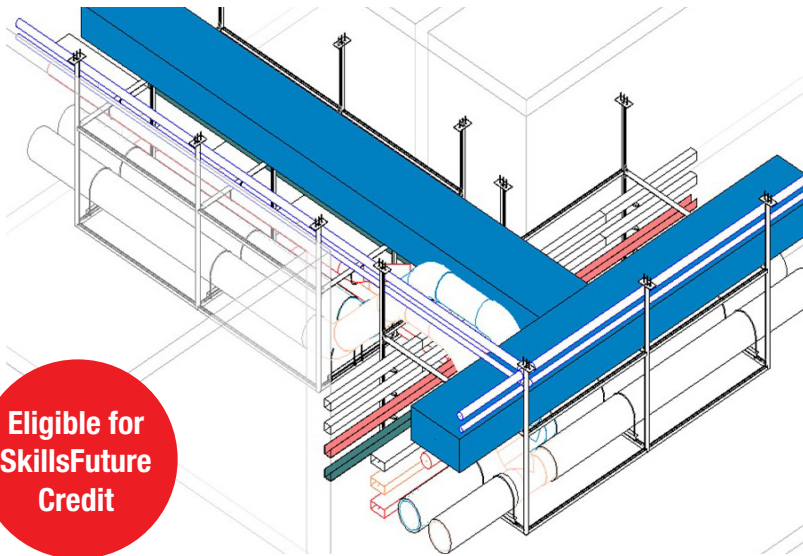


## STACKABLE MODULAR CERTIFICATES

You will have the flexibility to take the modular certificates in any order and at your own pace\*. The certificates can be stacked up towards the Specialist Diploma.

*\*maximum of 3 years to accumulate the certificates for an academic qualification*

# Specialist Diploma in MEP MODULARISATION (SDMM)



Eligible for  
SkillsFuture  
Credit

Modularisation and prefabrication of Mechanical, Electrical and Plumbing (MEP) systems is a game-changer to Singapore's construction industry. It transforms the way buildings are designed and built with improved productivity and better quality. The Specialist Diploma in MEP Modularisation (SDMM) is specially catered for learners who are keen to develop professionally and expand their capabilities to lead the adoption of modularized and prefab MEP, with knowledge and skills in the area of BIM for MEP, DfMA, advance jointing methods, as well as the life cycle production process of Prefab MEP systems. Lessons are conducted through classroom learning of principles and theories, reinforced by real world application through computer lab activities, hands-on work in the MEP lab as well as out-of-classroom experiential learning journey. Upon graduation, you will be part of the growing MEP experts in a game changing field of DfMA in the construction industry.

**Duration:** Modular Certificate A - 60 hrs  
Modular Certificate B - 45 hrs  
(Assessment: 3 hrs)

**Frequency:** 2 to 3 evenings per week  
(some lessons may be held on Saturdays)

**Venue:** BCA Braddell Campus and Online Learning

**Fee\*** (inclusive of GST): S\$3,250 (per modular certificate)

*\*Refer to next page for SSG funding details*

**Assessment:** Continuous and Project Based

*Registration closes 2 weeks prior to course commencement, or when the class is fully subscribed, whichever is earlier. Late registration may be consider on case by case basis.*

## Certificate in Prefabricated MEP System Integration

(Classroom + Synchronous E-Learning)

### MODULAR CERTIFICATE A:

Jan to Mar / Jul to Sep

This Certificate aims to equip learners with industry best practices in MEP Prefabrication process from off-site prefabricated MEP design, logistic planning to on-site modular MEP installation. Three types of MEP Modular systems will be discussed; namely horizontal run, vertical riser and platform. Learners will be able to adopt best practices in the production of prefabricated MEP systems, logistics in pre-installation activities, and on-site installation prefabricated MEP systems.

### COURSES OFFERED:

- Modular MEP Design
- DfMA Prefabrication & Modular MEP Installation
- Testing, Commissioning and Handover (O&M)
- Jointing Methods @ MEP Lab
- Project

## Certificate in Digital Delivery of Modular MEP

(Classroom + Synchronous E-Learning)

### MODULAR CERTIFICATE B:

Apr to Jun / Oct to Dec

This Certificate aims to provide learners with strong foundation in BIM MEP Modelling. Learners will apply MEP engineering calculation tool to execute simple MEP services design, as well as BIM application tool and plug-ins to enhance the design of a simple Prefabricated MEP model.

### COURSES OFFERED:

- Digital Design for MEP Services
- MEP Prefabrication Guide
- BIM MEP Modelling Fundamentals
- BIM MEP Coordination Essential
- Computational BIM for Modular MEP System Design
- Project

## ENTRY REQUIREMENT

Applicants who do not wish to complete the Specialist Diploma programme are not subject to the entry requirements.

The applicant must meet the following requirements:

- degree / diploma / equivalent qualification; and
- at least 3 years of working experience in the built environment or related fields, with background as project manager, construction manager, consultant or construction professional preferred.

**Note:** Applicants with relevant working experience but do not fulfil the above requirements will be reviewed on a case-by-case basis.

Applicants must have their own computers/laptops with minimum specifications to run BIM software (recommended 16GB RAM minimum) and access student portal.

*Applicants with degree or diploma qualification where English is not the medium of instruction is required to take an English Screening Test (EST) at a fee of S\$23.00 (incl. GST) conducted by the BCA Academy. Alternatively, applicant may choose to achieve the ESS Workplace Literacy Test Level 6 issued by SkillsFuture Singapore (SSG).*

## WHO SHOULD ATTEND

This Specialist Diploma Programme is designed for professionals in the built environment.

## AWARD OF CERTIFICATE

A participant must attain at least 75% of physical attendance and complete all assignments to acceptable standards to be eligible to be awarded each modular certificate. Participant who did not complete the assignments to acceptable standards but attained at least 75% of physical attendance will be issued with a certificate of attendance. The successful achievement of all modular certificates will lead to the awarding of the **Specialist Diploma in MEP Modularisation (SDMM)**.

## EXEMPTION

Learners who have completed BIM MEP Modelling Tool or/and BIM MEP Coordination certificates at BCA Academy will be exempted from taking either BIM MEP Modelling Fundamentals or/both BIM for MEP Coordination Essential respectively.

## SSG FUNDING^ DETAILS

Modular Certificate Title	Full Course Fee	Singaporeans, Singapore PRs and non SME company sponsored participants. Fee payable after 50% funding support.	Singaporeans 40 years old and above <u>OR</u> SME company sponsored Singaporeans or Singapore PRs. Fee payable after 70% funding support.
Certificate in Prefabricated MEP System Integration Classroom + Synchronous E-Learning (TGS-2022013933)	S\$3,250	S\$1,731.31	S\$1,123.83
Certificate in Digital Delivery of Modular MEP Classroom + Synchronous E-Learning (TGS-2022012528)	S\$3,250	S\$1,731.31	S\$1,123.83

^ The fees are inclusive of GST and are subject to change.

Participant must achieve at least 75% attendance and pass all assessments. BCA Academy reserves the right to recover the funded amount from the participant (self-sponsored) or employer (company sponsored) if participant did not meet the eligibility criteria. Details of SSG's funding can be found in <https://www.enterprisejobskills.gov.sg/content/upgrade-skills/course-fee-and-absentee-payroll-funding.html>

## WITHDRAWAL

Withdrawal notice must be made in writing to BCA Academy via [bca\\_academy@bca.gov.sg](mailto:bca_academy@bca.gov.sg).

The following stated days are pegged to the modular certificate commencement date:

- 14 days or more, 10% cancellation fee
- Less than 14 days but more than 3 working days, 25% cancellation fee
- 3 working days or less, 100% cancellation fee

## REGISTRATION

Visit BCA Academy Online StoreFront (OSF) @ <https://eservices.bcaa.edu.sg/registration/#/login>

**Course codes :**

Modular Certificate A: 79019A

Modular Certificate B: 79019B

